

Historic, Archive Document

Do not assume content reflects current scientific knowledge, policies, or practices.

62.73

Michell's

LIBRARY
RECORDS
Bulbs

★ SEP 24 1947 ★
U.S. DEPARTMENT OF AGRICULTURE

Plants

FALL 1947

Van Waveren's Giant
Prices: 3 bulbs, 85c;
doz., \$3.00; 100
\$22.50.

Aerolite
Prices: 3
bulbs, 75c;
doz., \$2.25;
100 \$18.00.

Bernardino
Prices: 3 bulbs,
60c; doz., \$2.00;
100 \$15.00.

See page 8

HENRY F. MICHELL CO., 516-518 Market St. Phila. 5, Pa.

6 Leaders in Tulips from Holland



Collection
(Darwin)

3 Each—6 varieties,
18 bulbs—\$2.50

6 Each—6 varieties,
36 bulbs—\$4.50

12 Each—6 varieties,
72 bulbs—\$8.50



Princess Elizabeth
Doz., \$1.50;
100 \$11.00.

Pride of Zwanenburg
Doz., \$1.75; 100 \$12.00.



Golden Age
Doz., \$1.75; 100
\$12.00.



Glacier
Doz., \$2.00;
100 \$14.00.



Insurpassable
Doz., \$1.75; 100
\$12.00.



City of Haarlem
Doz., \$1.75;
100 \$12.00.

SPECIAL TELEPHONE SERVICE LOMBARD 3-5620 to 3-5629. ORDERS WILL GET PROMPT, COURTEOUS ATTENTION.

MICHELL'S GREEN VELVET GRASS SEED - ONE OF THE FINEST AND MOST PERMANENT GRASSES FOR THE LAWN.

SEE NEW NOVELTIES IN FLOWER SEEDS.

Customers

please note
to avoid misunderstanding
read these conditions
of sale

Special Telephone Service



Bell:
Lombard 3-5620 to 3-5629
Telephone Your Order . . .
It Will Get Prompt, Courteous Attention Here

LOCAL DELIVERY

Our free delivery service covers the suburban Philadelphia area. The limits are: PAOLI, RIDLEY PARK, CHESTNUT HILL, WILLOW GROVE, ABINGTON, RYDAL, SOMERTON, SPRINGFIELD, MORTON, and intermediate points, but we do not guarantee to maintain a daily delivery to these places.

SPECIAL ATTENTION

To our customers in New Jersey:

Due to the curtailment of motor transportation and other conditions beyond our control, we are unable to make free deliveries to Camden and vicinity.

Shipment of goods can also be made by package service from Market and Chestnut Street Ferries, Broad Street Station, Reading Terminal, and B. & O. R. R., at 24th and Chestnut Streets. The tariff for shipments that can be made by this method on merchandise they will receive packed in one piece is as follows:

- 10 lbs. and under, 15c.
- 11 lbs. to 25 lbs., 23c.
- 26 lbs. to 40 lbs., 30c.
- 41 lbs. to 50 lbs., 38c.

Shipments weighing more cannot be sent via Package Service.

GIFT CERTIFICATES

"Michell's Gift Certificates" available in any amount and redeemable at any time for our merchandise, which will make unusual gifts for your garden-loving friends. They are ideal for Christmas, birthday and other remembrances.

WE WELCOME CHARGE ACCOUNTS

We invite you to take advantage of the convenience of a charge account with us. So that no time will be lost in executing your first order, please send us the names of two or more business houses with whom you have had past or present credit relations.

HAVE YOU MOVED?

Please let us know of any permanent change of address so that you may receive our catalogs regularly.

CUSTOMERS' SERVICE

We endeavor at all times to take care of our customers' requirements. However, due to present conditions, we are not always able to supply just the item you order. We ask your permission to substitute a similar variety when the supply of the variety ordered is exhausted. In this event we feel sure that we can render satisfactory service.

SHIPPING INSTRUCTIONS

Always state by what method you want goods forwarded; otherwise we will ship according to our best judgment.

PACKING CHARGES

No charge is made for boxes, packing, or bags, except for two-bushel seamless sacks, which are returnable for credit at the market price as charged.

C. O. D. SHIPMENTS

Goods can be sent C. O. D. with the exception of perishable items; plants and cold-storage bulbs. If shipment is requested by express or freight, send a partial remittance with the order. No C. O. D. orders accepted for less than \$1.00.

CONDITIONS OF SALE

All contracts, sales, and acknowledgments of orders are contingent on crop failures, our ability to import and make deliveries in conformity with the "Plant Quarantine Act," partial deliveries by growers or manufacturers, strikes, or other unavoidable causes beyond our control, clerical errors included; also unsatisfactory credit standing. All quotations are subject to market changes and goods being unsold on receipt of order.

"We give no warranty, express or implied, as to the productiveness of any seeds, bulbs or plants we sell, and we will not be in any way responsible for the crop. Our liability in all instances is limited to the purchase price."

FORWARDING SERVICE

We pay postage charges on all orders for Vegetable Seeds, Flower Seeds, and Grass Seeds in quantities up to 5 pounds (unless otherwise noted) to the First and Second Zones. If larger quantities of the above, also Bulbs, Plants, and Sundries, are wanted by Parcel Post, remit for postage the amount named in connection with the item to the First and Second Zones; for other Zones add additional postage or at the rate quoted in table below.

All Plants Roots, and Bulbs are forwarded by Express (or Parcel Post when possible), purchaser paying charges, unless otherwise noted.

For those of our customers who prefer to receive such goods by Parcel Post, we will be pleased to forward in this manner such plants as can be sent in this way at the following additional cost, which must be added to the value of each order for Plants, Roots, or Bulbs unless otherwise noted.

To all points east of the Mississippi River, add 10 per cent to cover postage and packing charges; to all points west of the Mississippi River, add 15 per cent.

SAFE ARRIVAL. We guarantee the safe arrival of all goods sent to points within the United States except when shipped to points where there is no Express or Freight agent; to such points the purchaser must assume any claim for loss or damage.

PARCEL POST RATES from Philadelphia (Subject to Change)

United States Parcel Post Rates (Seeds, Plants and Bulbs Included) (Subject to Change)	First pound or fraction	Each additional pound or fraction	Packages must not exceed 100 inches (length and girth combined)
Local Rate, Philadelphia.....	\$0.08	\$0.01	Limit of weight to all zones, 70 lbs. A fraction of a cent in the total amount of postage on any parcel shall be counted as a full cent.
1st Zone, within 50 miles of Philadelphia ..	.09	.01	
2d Zone, over 50 and under 150 miles...	.09	.01	
3d Zone, over 150 and under 300 miles...	.10	.02	
4th Zone, over 300 and under 600 miles...	.11	.04	
5th Zone, over 600 and under 1000 miles...	.12	.06	
6th Zone, over 1000 and under 1400 miles...	.13	.08	
7th Zone, over 1400 and under 1800 miles...	.15	.10	
8th Zone, over 1800 miles16	.12	

On Seeds, Bulbs, Plants, or Roots not exceeding eight (8) ounces in weight, the postage charge is 1c for each two (2) ounces or fraction thereof; on Sundries or other Merchandise not exceeding eight (8) ounces in weight, the postage charge is 1½c for each two (2) ounces or fraction thereof. Seeds, Bulbs, Plants, Roots, Sundries, etc., weighing over eight (8) ounces are sent at zone rates.

If Special Delivery is wanted, an additional 17c is required on packages weighing up to two (2) pounds—25c on packages weighing more than two (2) pounds and up to ten (10) pounds—35c on packages weighing more than ten (10) pounds, which also includes special handling and transportation as first-class mail.

If remittance accompanies order, a sufficient amount should be included to cover the extra charges—if order to be sent by either of the methods as stated above.

PARCEL POST CHARGES QUOTED ARE FOR DELIVERY IN THE UNITED STATES ONLY

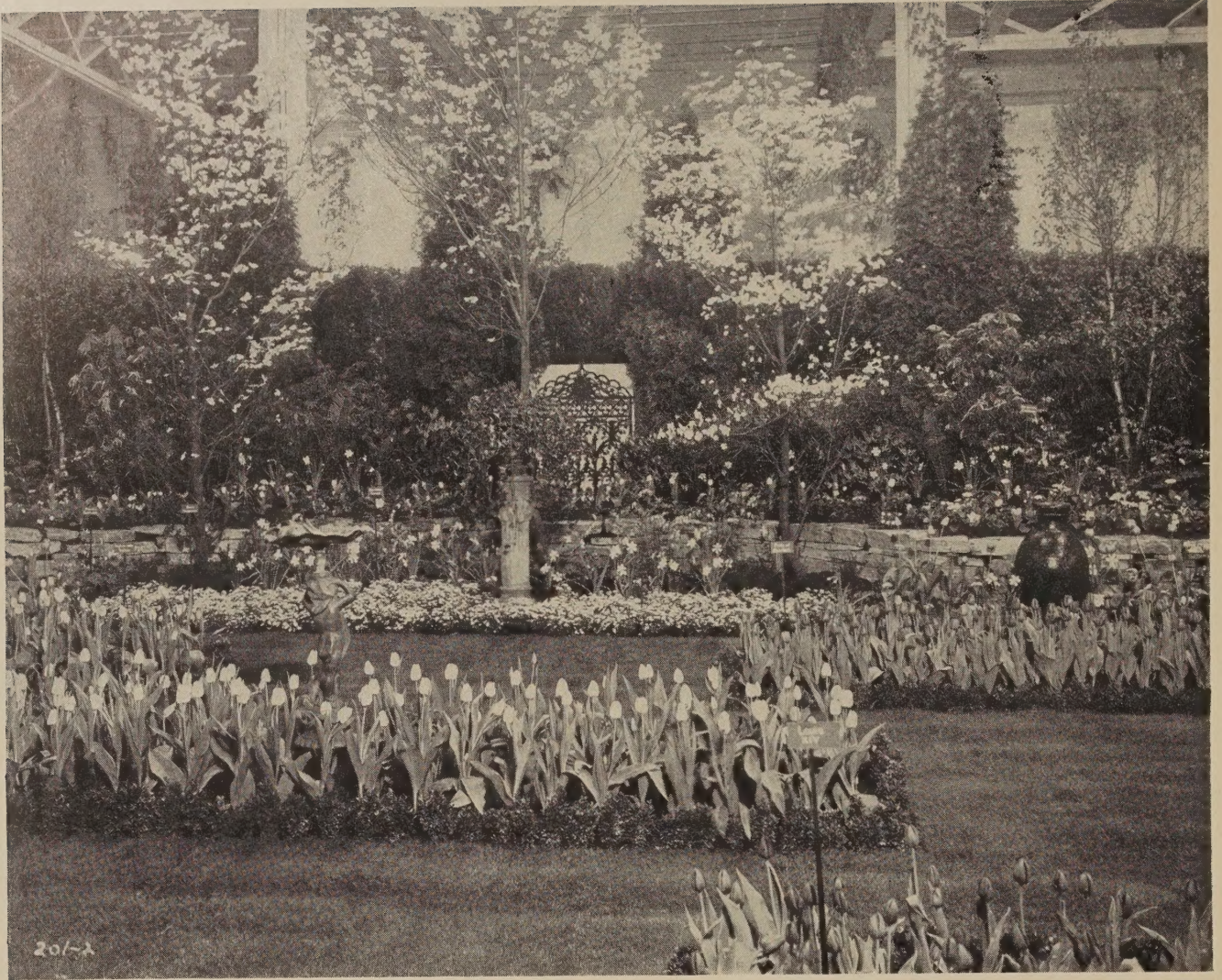
Notice to Customers in Canada and Other Countries Outside of the United States. In remitting for purchases at the time of ordering, or when paying accounts, by reason of the exchange we ask that you please send Post Office Money Order in United States funds or a check or draft on a New York or Philadelphia Bank in par in United States funds.

HENRY F. MICHELL CO.

516-518 Market Street

PHILADELPHIA 5, PA.

WAREHOUSES: 509-11-13 Ludlow St. and American and Dauphin Sts.



Formal Spring Garden

by

HENRY F. MICHELL COMPANY

—oOo—



Philadelphia Flower Show
March, 1947

Awarded First Prize and Gold Medal

MICHELL'S TULIPS

In Modern Gardens Are Superb for Color, Size and Dependability

The asterisk (*) preceding the variety denotes that it is suitable for forcing as well as bedding. The letters E, F, G and H, following the variety indicate their relative time of blooming, the E's being the earliest to bloom. The figures indicate the normal height in inches.

If Tulip bulbs are wanted by Parcel Post, add 25c per 100 for postage to the first and second zones.

SUPERB DARWINS

***ALLARD PIERSON.** E26. Dark crimson-maroon. An early forcing variety. Doz. \$1.50; 100, \$10.00.

ALL BRIGHT. F25. Carmine-red, edged light blood-red, blue base. Petals shaded purplish red on outside. Sport of Bartigon. Doz., \$1.50; 100, \$10.00.

***BARTIGON.** F24. Fiery red, with pure white base. A very showy variety. Doz., \$1.50; 100, \$10.00.

BLEU AIMABLE. F25. Lavender with white base, starred blue. Distinct in shape. Doz., \$1.75; 100, \$12.00.

CAMPFIRE. F24. Bright cochineal-red. Recommended instead of Bartigon, as it has a much better color. Doz., \$1.50; 100, \$10.00.

***CITY OF HAARLEM.** F27. One of the best scarlet varieties, having steel-blue base with white outline. Fine for bedding or forcing in pots. Flowers large, on strong stems. Doz., \$1.75; 100, \$12.00.

***CLARA BUTT.** G21. Delicate salmon-pink, of perfect shape. Good bedder and forcer. Doz., \$1.75; 100, \$12.00.

DUKE OF WELLINGTON. F26. Outstanding pure white flower of perfect form with cream anthers and base. Flowers are carried on a stiff stem and are of lasting quality. Doz., \$1.75; 100, \$12.00.

***FARNCOMBE SANDERS.** F25. Giant, brilliant scarlet flowers with a clear white base. Very showy. A good forcer. Doz., \$1.50; 100, \$11.00.

GLACIER (Wildlust). F28. A giant among white Tulips. White base and anthers. An oval-shaped flower of strong substance on straight stems. A good forcer. Doz., \$2.00; 100, \$14.00.

GOLDEN AGE. F24. Bright golden orange with a lighter shade inside. Large flower; straight stem. Recommended for exhibition purposes. Doz., \$1.75; 100, \$12.00.

INSURPASSABLE. F28. A mammoth orchid-colored Tulip. Lilac-mauve ribbed with white. Tall, strong stems. Highly recommended. Doz., \$1.75; 100, \$12.00.

KING GEORGE V. F25. Salmon-scarlet shaded rose; blue base. An excellent bedder. Holds its color in the sun. Doz., \$1.75; 100, \$12.00.

***LA TULIPE NOIRE (The Black Tulip).** G25. The nearest to black in Tulips—deep maroon-black with a velvety sheen. Doz., \$1.75; 100, \$12.00.

NIPHETOS. F28. Magnificent lemon-yellow paling to a pale ivory-yellow when fully grown; light base with yellow anthers. Petals are of remarkable texture and beautifully recurved. Doz., \$1.75; 100, \$12.00.

***PHILIP SNOWDEN.** F25. Light carmine-purple with lighter edge. Outer petals shaded amaranth, white center. Forcing qualities. Doz., \$1.50; 100, \$10.00.

***PRIDE OF HAARLEM.** F26. Brilliant rosy carmine flower of magnificent form and size. Unsurpassed for massing among shrubs or in borders. Doz., \$1.50; 100, \$11.00.

PRIDE OF ZWANENBURG. G29. Lovely bright pink, suffused with rose-red; white base and black anthers. Outstanding garden variety. Doz., \$1.75; 100, \$12.00.

***PRINCESS ELIZABETH.** F23. Large, clear pink flower, deepening with age. Makes a beautiful show planted in front of evergreens. Doz., \$1.50; 100, \$11.00.

***PRUNUS.** F25. A delightful rose-pink with white base. Large, strong flower. Excellent for forcing or the garden. Doz., \$1.50; 100, \$10.00.

***REV. H. EWBANK.** F20. Light heliotrope, shaded lavender. A fine bedder; also stands forcing well and produces large flowers of a very pleasing color. Doz., \$1.50; 100, \$11.00.

ROSE COPELAND. F25. A sport of the very popular Wm. Copeland. It is a beautiful shade of soft rose-pink. Doz., \$1.50; 100, \$10.00.

THE BISHOP. F30. Excellent for beds or borders, or for forcing in pots. Deep violet, center white, edged with blue; anthers black. A large bowl-like flower of very artistic coloring. Doz., \$1.75; 100, \$12.00.

VICTOIRE D'OLIVEIRA. F26. Dark red with white bordered deep blue base. Good for forcing as well as planting outside. Doz., \$1.50; 100, \$10.00.

***WILLIAM COPELAND.** E24. One of the best early forcing varieties. Grown indoors, the color is a beautiful delicate lavender; grown in the border, lilac-rose. Doz., \$1.50; 100, \$11.00.

***WILLIAM PITT.** E24. Dark crimson, shaded purple on outer petals. A large variety. Doz., \$1.50; 100, \$11.00.

YELLOW GIANT. E28. Large, globular, deep golden yellow flowers carried on tall, stiff stems. Excellent for garden or exhibition. Doz., \$1.75; 100, \$12.00.

ZWANENBURG. F28. A very beautiful flower of pure sparkling white, center marked with shining black anthers. The blooms have a spicy fragrance. Doz., \$1.75; 100, \$12.00.

DARWIN, MIXED. A well-balanced assortment of colors and shades made from many named varieties and containing only giant-flowering, long-stemmed sorts. Doz., \$1.40; 100, \$10.00; 1000, \$95.00.

DUTCH BREEDER TULIPS

Similar to the Darwins in their tall, strong growth, and flowering at the same time. They produce immense bloom on long, stiff stems, and in some instances are larger than the Darwins. Their artistic colors make them great favorites with those who desire to contrast their bronze, terra cotta, and buff shadings with the lighter colored sorts of the Darwins. They make a fine effect in hardy borders, and when used as a cut flower last a long while in water.

If Tulip bulbs are wanted by Parcel Post, add 25c per 100 for postage to the first and second zones.

BACCHUS. F28. Dark violet-blue, base starred white. One of the best varieties to plant with bronze or light blue shades. Doz., \$1.75; 100, \$12.00.

CARDINAL MANNING (Goliath). G28. Dull wine-red, flushed rosy brown, changing to almost orange at edges of petals. Very large, egg-shaped flower. Doz., \$1.75; 100, \$12.00.

CHERBOURG. F30. Old-gold shaded light bronze. Fine egg-shaped Tulip on a strong stem. A favorite in the garden. Doz., \$2.00; 100, \$14.00.

DILLENBURG. F28. A brilliant salmon-orange, shaded rose. The flower is large and borne on a strong, stiff stem. Recommended for the garden. Doz., \$1.75; 100, \$12.00.

***DOM PEDRO.** G24. A beautiful coffee-brown, shaded maroon; inside rich mahogany. Delicate fragrance. Can be forced. Doz., \$1.75; 100, \$12.00.

INDIAN CHIEF. G32. Deep Indian red flushed purple and edged warm brown with age. Enormous flowers on long stately stems. Very artistic and fine for exhibition purposes. Doz., \$2.00; 100, \$14.00.

LOUIS XIV. G28. Dark purple, flushed bronze, with broad margin of golden brown. A unique variety of striking beauty. Enormous flowers on strong stems. Doz., \$2.00; 100, \$14.00.

***ORANGE GLORY (Joy McArden).** E25. Beautiful light terra-cotta-orange. Flower is long lasting and stands the heat. Can also be forced. Doz., \$1.75; 100, \$12.00.

***PANORAMA (Fairy).** E24. Beautifully shaped, dull reddish brown flower with bronze shading. Very popular and good for early forcing. Doz., \$1.75; 100, \$12.00.

***TANTALUS.** F30. Large cup-shaped flower of light yellow shaded dull purple. Good lasting qualities and recommended for forcing. Doz., \$2.00; 100, \$14.00.

BREEDER TULIPS, MIXED. A choice mixture in a combination of the best colors and shades. Fine for cutting or display. Doz., \$1.50; 100, \$11.00.

MICHELL'S TULIPS

MAY-FLOWERING or COTTAGE TULIPS

- ***ALBINO.** F25. Pure white, graceful flowers. Highly recommended for forcing. Doz., \$1.75; 100, \$12.00.
- ADVANCE.** E28. A glorious orange-scarlet Tulip of tremendous size on strong, tall stems; center is glittering black. Recommended. Doz., \$1.75; 100, \$12.00.
- BELLE JAUNE.** G26. Beautiful golden yellow with a bright yellow interior; light base with yellow anthers. An excellent bedding variety. Large, long flower on stiff, straight stem. Doz., \$1.50; 100, \$11.00.
- CARRARA.** F26. Graceful, pure white flowers which are round, cup-shaped and large, with broad petals. Excellent for forcing in pans. Perfect form, purity, and long-lasting qualities. Doz., \$1.75; 100, \$12.00.
- ***GOLDEN HARVEST.** E26. Large, globular, bright lemon-yellow flowers of great substance on tall, stiff stems. May be forced. Doz., \$1.50; 100, \$11.00.
- GRENADIER.** F24. Brilliant orange-red flowers on very graceful stems. A leading variety for color effect, excellent in beds and borders. Doz., \$1.50; 100, \$11.00.
- HENRY CORREVON.** G26. Bright Geranium-red with pure white base. A most beautiful Tulip and highly praised in all trial gardens. Doz., \$1.50; 100, \$11.00.
- ***INGLESCOMBE YELLOW.** F20. Is often called the "Yellow Darwin." Flowers are beautifully formed. Doz., \$1.50; 100, \$11.00.
- MOTHER'S DAY (Lemon Queen).** G26. Soft lemon-yellow Tulip; excellent for bedding purposes. Also good for late forcing. Doz., \$1.75; 100, \$12.00.
- MRS. JOHN T. SCHEEPERS.** G26. Clear chrome-yellow; erect, tall stem. Enormous oblong flower of vigorous growth. Doz., \$1.75; 100, \$12.00.
- ***MRS. MOON.** H24. Large, golden yellow flowers with reflexing, pointed petals. Very beautiful; looks well with purple Irises. Doz., \$1.75; 100, \$12.00.
- ORANGE KING.** G24. Glistening deep orange, shaded rose; yellow center; sweet scented. Doz., \$1.50; 100, \$10.00.
- PICOTEE (Maiden's Bush).** G20. White with distinct pink-edged border, which suffuses the flower as it ages. Doz., \$1.50; 100, \$11.00.
- ROSABELLA.** G24. Beautiful carmine-rose, broad white edge, inside flesh-pink with creamy white center. Excellent for the garden. Flowers are shaped like rosebuds. Doz., \$1.75; 100, \$12.00.
- MAY-FLOWERING TULIPS, MIXED.** A lovely mixture, covering almost every color and shade. Gives a superb display if planted in masses, groups, or clumps. Doz., \$1.50; 100, \$11.00; 1000, \$100.00.

SINGLE EARLY TULIPS

The Early Single Tulips bloom a long time before the Late Tulips begin to show color and give the garden a glorious range of soft and brilliant colors early in spring, a time when this will be best appreciated. They mature quickly after flowering, so that the bulbs can be lifted early and the space planted again with summer plants. The asterisk (*) preceding the name of a variety denotes that it is suitable for forcing as well as bedding. The letters A, B, and C following the name indicate their relative earliness to bloom, the A's being the earliest, followed by the B's and later by the C's. Figures indicate the normal height in inches.

- ***BRILLIANT STAR.** A12. Very large, vermilion-scarlet flower. Highly recommended for early forcing. Doz., \$1.50; 100, \$10.00.
- ***CHRYSOLORA.** B10. Golden yellow. A fine bedding variety. Doz., \$1.75; 100, \$12.00.
- ***COULEUR CARDINAL.** C10. Bright scarlet. Very attractive variety. Fine for late forcing or bedding. Doz., \$1.75; 100, \$12.00.
- ***DE WET (Fireglow).** B16. Beautiful golden yellow flowers flushed and stippled fiery orange. Outstanding as a forcing variety. Doz., \$1.75; 100, \$12.00.
- ***IBIS.** B12. Very large, dark brilliant pink flowers. Extra early for forcing. Also recommended for bedding. Doz., \$1.50; 100, \$10.00.
- ***KEIZERSKROON.** B15. Brilliant red with gold border. Extra large, on long stems. Doz., \$1.75; 100, \$12.00.
- ***PINK BEAUTY.** B12. Bright cherry-rose, center of petals striped white. Doz., \$2.00; 100, \$14.00.
- ***ROSE LUISANTE.** C10. Large, deep rose-pink flowers. Excellent for forcing or bedding. Doz., \$1.75; 100, \$12.00.
- ***VERMILION BRILLIANT.** B10. Brilliant vermilion-scarlet. Extremely early forcer. Doz., \$2.00; 100, \$14.00.
- ***WHITE HAWK (Albion).** A12. Large, globe-shaped, pure white flowers. Excellent early forcer and bedder. Doz., \$1.50; 100, \$10.00.
- ***YELLOW PRINCE.** B10. Golden yellow. Fine for either bedding or forcing. Doz., \$1.50; 100, \$10.00.
- SINGLE EARLY TULIPS IN MIXTURE.** Our mixtures of Tulips have long been noted for their brilliancy, proper blending and variety of colors. Doz., \$1.50; 100, \$11.00.

BOTANICAL OR SPECIES TULIPS

These Tulips are particularly adapted for rock gardens or borders. They show their bright colors early in the season and have graceful, recurving petals. For the most striking effects, plant in masses or clumps.

- CLUSIANA.** Lady or Candystick Tulip. Outer petals cherry-red, inner petals creamy white with violet base. Very choice for massing in front of evergreens. Height, 8 inches. Doz., \$1.50; 100, \$10.00.
- EICHLERI.** Crimson-scarlet shaded orange, with black center marked with gold. Height, 9 inches. Doz., \$1.50; 100, \$10.00.
- FOSTERIANA, RED EMPEROR (Mad. Le-feber).** A glorious scarlet-red Tulip of remarkable size and substance. Large black center with a yellow border. Height, 18 inches. Doz., \$2.00; 100, \$14.00.
- KAUFMANNIANA.** Blooms early in April. Flowers creamy white tinged carmine. Wonderful effects may be had if planted under trees or naturalized in shady places. Height, 5 to 7 inches. Doz., \$1.50; 100, \$10.00.
- MARJOLETTI.** Soft primrose, shaded carmine-red at base. Blooms early in April. Height, 12 inches. Doz., \$1.75; 100, \$12.00.
- SYLVESTRIS (T. florentina odorata).** This is a handsome, sweet-scented, yellow variety. Often has two flowers to a stem. Height, 7 inches. Doz., \$1.75; 100, \$12.00.
- MIXED.** Doz., \$1.50; 100, \$11.00.

Six or twelve bulbs of each variety of Botanical Tulips, set close together, produce the best effect.

ALL PRICES SUBJECT TO MARKET CHANGES

MICHELL'S TULIPS

DOUBLE EARLY TULIPS

The Double Tulips usually flower a few days later than the Single Early varieties. They are very popular for bedding and a number of the varieties are also excellent for forcing.

- ***BOULE DE NEIGE** (Purity). B10. Large, pure white flowers, resembling a Peony in form. Excellent for bedding or forcing. Doz., \$1.75; 100, \$12.00.
- ***COURONNE D'OR** (Crown of Gold). B12. A handsome rich golden yellow, flushed orange. Good bedding sort and fine for cutting. Doz., \$1.75; 100, \$12.00.
- ***ELECTRA**. B12. Enormous, rosy violet-red flowers. Doz., \$1.75; 100, \$12.00.
- IMPERATOR RUBRORUM**. B10. Brilliant scarlet. For bedding or forcing. Doz., \$1.75; 100, \$12.00.
- ***MR. VAN DER HOEF** (Yellow Murillo). A10. A pure golden yellow sport of Murillo. Doz., \$1.75; 100, \$12.00.
- ***MURILLO**. B10. Delicate rose-pink. One of the best forcers. Still very popular. Doz., \$1.75; 100, \$12.00.
- ORANGE NASSAU**. B12. Bright orange-scarlet, margined orange, outer petals shaded cherry-red. Doz., \$1.75; 100, \$12.00.
- ***PEACH BLOSSOM**. B12. Bright rose-pink, flushed white, deepening to carmine-rose with age. Doz., \$1.75; 100, \$12.00.

***VUURBAAK**. B12. Brilliant orange-scarlet. For forcing or bedding. Produces large flowers. Doz., \$1.75; 100, \$12.00.

EARLY DOUBLE MIXED TULIPS

SUPERFINE QUALITY. A choice mixture of many colors and shades, from named sorts. Doz., \$1.50; 100, \$11.00.

PARROT TULIPS

These belong to the late-flowering class and on account of their peculiar markings and shadings are much in demand. The petals have feathered edges, and in addition to other colors combine shades of green.

BLUE PARROT. Bright violet and mauve, tinted bronze outside; inside purple shaded steel-blue. Enormous flower borne on strong, stiff stem. A general favorite. Doz., \$2.00; 100, \$14.00.

FANTASY. A sport from the Darwin Tulip, Clara Butt. True salmon-rose, with ragged edges and fantastically shaped petals; the outer sides of the petals marked apple-green. Stiff, upright stems. Doz., \$2.00; 100, \$14.00.

THERESE (Caprice). Bright cochineal-carmine, inside vivid cerise-scarlet, white center, tinted blue. Outer petals marked parrot green. Tall stem. Doz., \$2.50; 100, \$16.00.

VIOLET QUEEN. A beautiful soft violet, flushed lavender, with very deeply cut petals. Outer petals strongly marked bronzy green. White markings in the centers are quite attractive. A Parrot Tulip of remarkable size carried on a tall, strong stem. Doz., \$2.00; 100, \$14.00.

TRIUMPH TULIPS

Triumph Tulips are the result of crossing Early Single and Darwin Tulips, recommended for borders; stems very strong. They flower earlier than Darwins.

ALBERIO. Cherry-red; yellow edge. Early. Height 24 in. Doz., \$1.50; 100, \$10.00.

ELIZABETH EVERS. Aniline-red, shaded silvery rose; base white. Height 22 in. Doz., \$1.75; 100, \$12.00.

KANSAS. Snow-white, lemon-yellow center, with white anthers. Height 22 in. Doz., \$1.75; 100, \$12.00.

LORD CARNARVON. Lavender-pink and white, with white edge. Height 22 in. Doz., \$1.50; 100, \$10.00.

TELESCOPIUM. Reddish violet. Recommended. Height 22 in. Doz., \$1.75; 100, \$12.00.

URSA MINOR. Beautiful golden yellow. Height 18 in. Doz., \$1.75; 100, \$12.00.

MICHELL'S

SWEET-SCENTED HYACINTHS

CULTURAL DIRECTIONS FOR HYACINTHS

Outdoor Culture: Plant in October and November, in good, well-drained garden soil. Plant bulbs so that the top will be 3 to 4 inches below the surface and 6 to 8 inches apart. After the ground has frozen, cover with litter, leaves, or manure, to protect them from frost; this should be removed in spring when danger from hard frost is past.

Pot Culture: Plant any time from September to December, using a 4- or 5-inch pot for single bulbs or several bulbs may be planted in a larger pot or bulb pan. After planting, water well and put in a cool, dark, airy place until well rooted, after which remove to a cool room and later to a warmer room.

As there is a slight variation as to time of blooming of the various sorts, we have indicated their relative time of flowering by letters following the name of the variety, the A's being the earliest, the D's the latest.

Single Scarlet Shades

JAN BOS. A carmine-red tinted scarlet; lighter center. Good stem and flower. Recommended.

LA VICTOIRE. A. One of the finest red varieties, maintaining its brilliant scarlet color. Unsurpassed for bedding or forcing. Should be in every collection.

Single White Shades

ARENTE ARENSEN. A. Snow-white; wide-opening bells on a broad compact spike. Extra fine for forcing.

L'INNOCENCE. A. Pure white. Excellent forcer and choice for bedding. Extra-fine truss with large bells.

QUEEN OF THE WHITES. C. Pure white. Strong spike; large bells. Good for late forcing and excellent for bedding.

Single Pink and Rose Shades

GERTRUDE. A. Deep rose-pink. Excellent for forcing and bedding. Large, well-filled truss.

LADY DERBY. A. Clear rose-pink. An excellent forcer and very fine for bedding, due to its strong stem.

MARCONI. B. A handsome spike of rich rose-pink, center flushed white. Bells of great substance. Fine for early or late forcing.

QUEEN OF THE PINKS. C. Bright rose-pink; large spike and good-sized bells on a sturdy stem. The ideal variety for late forcing and also excellent for bedding.

Single Blue Shades

BISMARCK. A. Large sky-blue flowers or long stems. Excellent for early forcing and good for bedding.

GRAND MAITRE. B. Large, deep porcelain-blue bells in very long, well-filled truss.

KING OF THE BLUES. D. Deep dark blue. A fine, compact truss. For late forcing and for bedding.

QUEEN OF THE BLUES. D. Clear silvery or light porcelain-blue. Excellent for bedding or exhibition. Bells are medium size and thickly set on a strong stem.

Single Yellow and Orange Shades

CITY OF HAARLEM. C. Well-formed, pure golden yellow bells on good spikes. Valuable for exhibition purposes and excellent for the garden.

KING OF THE YELLOWS. C. A fine spike of perfect form, composed of orange-yellow bells, heavily set on the stem.

	3 for	Doz.	100
Top-size bulbs . . .	\$1.25	\$4.50	\$35.00
First-size bulbs . . .	1.00	3.50	27.50
Second-size bulbs75	3.00	22.50
Third-size bulbs . . .		2.75	20.00
Miniature bulbs . . .		2.25	17.50

ALL PRICES SUBJECT TO MARKET CHANGES



French Roman Hyacinths

OUTSTANDING DAFFODILS

BEERSHEBA. Without question the largest and strongest white Narcissus. We recommend this variety for all purposes. Beautifully formed trumpet, nicely flanged at the mouth with perfectly flat perianth. 3 for \$1.10; doz., \$4.00; 100, \$30.00.

BATH'S FLAME. (Barri.) Deep primrose perianth, with long broad petals; large, deep yellow cup with wide edge of orange-red. A flower of outstanding character and color. 3 for 85c; doz., \$3.00; 100, \$20.00.

FEBRUARY GOLD. Cyclamineus Hybrid. Perianth golden yellow; trumpet fringed, deep orange-yellow. Ideal for sheltered and shaded spots in the garden; also rock garden. 3 for 65c; doz., \$2.00; 100, \$15.00.

FRANCISCA DRAKE. Incomparabilis. Pure white perianth petals tinted gold at the base, which shows through on the outside. Cup deep, wide, yellow (golden) at the base changing gradually to flame-orange at the densely frilled edge. 3 for 85c; doz., \$3.00; 100, \$22.50.

LOVENEST. Bicolor. One of the very few members of the "Pink Daffodil" class. Among the daintiest of all the trumpets; medium in height with a star-shaped perianth and nicely proportioned trumpet of saffron-yellow turning to apricot-pink. 3 for \$1.25; doz., \$4.50; 100, \$35.00.

MARY COPELAND. Double. The long petals are a pure creamy white with a golden ray down the center, interspersed with shorter petals of lemon and brilliant orange. One of the finest Doubles. 3 for \$1.25; doz., \$4.50; 100, \$35.00.

ST. AGNES. Tazetta Hybrid. A beautiful Poetaz with very flat, rounded perianth, creamy white; the crown is flat, bright orange-scarlet. Two or more flowers on a stem. 3 for 85c; doz., \$3.00; 100, \$20.00.

TUNIS. Leedsi. A large, tall, robust Leedsi of lasting substance; broad waved white perianth and large bold ivory crown with serrated brim, retaining a flush of pale coppery gold at the edge. 3 for \$1.25; doz., \$4.50; 100, \$35.00.

YELLOW POPPY. Incomparabilis. Overlapping primrose-yellow perianth and expanded shallow cup of bright yellow edged orange. 3 for 60c; doz., \$2.00; 100, \$15.00.

French Roman HYACINTHS

French Roman Hyacinths afford a continuous supply of bloom from early winter until late in spring if planted in succession. They are very fragrant.

Easily grown in pots or pans, and if bulbs are potted in September, the pots plunged in the open ground for a month, until well rooted, and then brought in the house, they can be had in flower in November or December, and a continuous supply of flowers may be had by bringing in a few pots or pans

at intervals of about 2 weeks. The bulbs should be planted quite close together; a 6-inch pot or pan will be sufficiently large for six bulbs. They are not hardy and are not suitable for outdoor planting.

	3 for	Doz.	100
WHITE. Extra-select			
bulbs	\$0.90	\$3.25	\$22.50
Mammoth bulbs .	1.00	3.50	27.50
LIGHT BLUE90	3.25	22.50
LIGHT PINK	1.00	3.50	25.00

MICHELL'S NARCISSUS or DAFFODILS

GIANT TRUMPET VARIETIES

AEROLITE. B15. A huge golden Daffodil, beautifully proportioned, with deep primrose perianth and pure medium yellow trumpet. 3 for 75c; doz., \$2.25; 100, \$18.00.

BEN HUR. B15. A glorious Giant Trumpet, deeply frilled and of pure Roman gold. One of the best. 3 for \$1.00; doz., \$3.50; 100, \$25.00.

EMPEROR. C18. One of the best Narcissus, for either outdoors or indoors. Pale yellow trumpet; primrose perianth. Top-size bulbs. 3 for 75c; doz., \$2.25; 100, \$16.00.

GLORY OF SASSENHEIM. B18. Beautiful large bicolor; perianth white; trumpet golden yellow. 3 for 75c; doz., \$2.25; 100, \$16.00.

KING ALFRED. B18. Intense golden yellow; trumpet large and open, with frilled edge. 3 for Doz. 100
First-size bulbs . \$2.00 \$14.00
Top-size bulbs ... \$0.85 3.00 20.00
Jumbo bulbs ... 1.00 3.50 25.00

MINISTER TALMA. A18. Large, bright yellow open trumpet, deeply frilled and flanged at brim. 3 for 75c; doz., \$2.25; 100, \$15.00.

MRS. E. H. KRELAGE. B21. Often referred to as the "White King Alfred." Pure white perianth, creamy white trumpet. 3 for \$1.00; doz., \$3.50; 100, \$25.00.

ROBERT SYDENHAM. B20. An outstanding, heavily frilled, giant-flowering variety. Trumpet golden yellow with a soft sulphur-yellow perianth. 3 for 85c; doz., \$3.00; 100, \$22.50.

SPRING GLORY. B16. An extra-fine variety, with pure white perianth and a golden yellow trumpet. 3 for 75c; doz., \$2.00; 100, \$15.00.

THE FIRST. The earliest of all yellow Daffodils. Bold golden trumpet. Excellent for forcing. 3 for 75c; doz., \$2.25; 100, \$16.00.

TRESSERVE. B17. Large yellow trumpet; pale yellow perianth. 3 for 75c; doz., \$2.25; 100, \$16.00.

VAN WAVEREN'S GIANT. B16. Perianth soft primrose-yellow, with large bright yellow trumpet. One of the best in the giant size. 3 for 85c; doz., \$3.00; 100, \$22.50.

NARCISSUS TRIANDRUS

MOONSHINE. Star-shaped creamy white flowers, often three to a stem, drooping gracefully. A great favorite especially when used for the rock garden or naturalizing in the shade. 3 for 85c; doz., \$3.00; 100, \$20.00.

THALIA. Orchid-flowered Narcissus. C15. Produces 3 or 4 blooms on sturdy stem; color is a gorgeous white and flowers are so arranged as to remind one of Orchids. 3 for \$1.10; doz., \$4.00; 100, \$30.00.



Giant Trumpet Narcissus, King Alfred

MICHELL'S NARCISSUS or DAFFODILS

Medium Trumpet Varieties

ALCIDA. Barri. B15. Giant flower with creamy star-shaped perianth, opening flat, and broad citron-yellow cup with blood-orange frill. 3 for 85c; doz., \$2.50; 100, \$18.00.

BERNARDINO. Incomparabilis. B15. Large, creamy perianth; cup widely expanded and frilled, stained deep orange and apricot. A superb variety. 3 for 60c; doz., \$2.00; 100, \$15.00.

CROESUS. Incomparabilis. A20. Perianth is primrose-yellow, with thick, overlapping petals; an unusually large and widely expanded crown of deep orange-red. 3 for 75c; doz., \$2.00; 100, \$15.00.

DIANA KASNER. Barri. B18. Pure white perianth; large fluted yellow cup, with blood-red frill. 3 for 60c; doz., \$2.00; 100, \$15.00.

FIRETAIL. Barri. B. Broad, creamy white perianth of firm texture; flat crown of brilliant crimson-scarlet. An outstanding red-cupped variety. 3 for \$1.00; doz., \$3.25; 100, \$22.50.

HELIOS. Incomparabilis. Deep golden yellow perianth, semi-overlapping; the cup opens a little darker than the petals and in a cool climate gradually changes to light orange. 3 for 75c; doz., \$2.25; 100, \$15.00.

JOHN EVELYN. Incomparabilis. B16. White perianth with wide-open, apricot-colored cup. 3 for \$1.00; doz., \$3.50; 100, \$25.00.

LORD KITCHENER. Leedsi. B16. A beautiful flower with broad white perianth, large primrose crown. 3 for 60c; doz., \$2.00; 100, \$15.00.

RED CROSS. Incomparabilis. A large, strong flower, opening flat; primrose-yellow perianth and deep, densely frilled, dark orange cup. Very showy. 3 for \$1.00; doz., \$3.25; 100, \$22.50.

SIR WATKIN. Incomparabilis. C15. Perianth sulphur-yellow; cup tinged with orange. 3 for 60c; doz., \$2.00; 100, \$15.00.

DOUBLE NARCISSUS

PRIMROSE PHOENIX. C. Large, rose-shaped primrose-yellow flowers on long stems. 3 for 60c; doz., \$2.00; 100, \$15.00.

TWINK. A. A double of the semi-full type, the petals alternating a soft primrose and clear orange. 3 for 85c; doz., \$3.00; 100, \$20.00.

VON SION. C. The true double Daffodil. Pure golden yellow, entirely free from green-tipped flowers. Top-size bulbs. 3 for 60c; doz., \$2.00; 100, \$15.00.

JONQUILS, SWEET-SCENTED

GOLDEN SCEPTRE. 20. Large, golden yellow trumpet-shaped, very fragrant blooms. Doz., \$1.75; 100, \$12.00.

SINGLE. 12. Rich yellow; very fragrant. Free flowering and fine for cutting. Doz., \$1.50; 100, \$10.00.

DOUBLE. 12. Flowers very double, deep golden yellow, not quite as fragrant as the single, but of very graceful form. Doz., \$1.50; 100, \$10.00.

NARCISSUS POETAZ

(Cluster-Flowered Narcissus)

ABUNDANCE. C. Creamy yellow; pure yellow cups. Very free flowering and an excellent cut flower. Doz., \$1.75; 100, \$12.50.

CHEERFULNESS. C. Excellent double-flowering type. A real double white with a faint suggestion of pale yellow at base. Doz., \$1.75; 100, \$12.00.

ELVIRA. Pure white with delicate yellow cup; fragrant. Two or three stems are produced from a single bulb, each having 3 or 4 blooms. Doz., \$1.75; 100, \$12.00.

LAURENS KOSTER. B. Flowers large; perianth pure white, with deep orange-yellow cup. Frequently 4 or 5 flowers are produced on a stem. Doz., \$1.75; 100, \$12.00.

ORANGE CUP. C. Creamy white; conspicuous orange cups—a most exquisite color combination. Doz., \$1.75; 100, \$12.00.

NARCISSUS POETICUS

(Poet's or Pheasant's-Eye Narcissus)

ACTAEA. The largest Poeticus Daffodil. Broad snow-white perianth; very large eye, broadly margined with dark red. Doz., \$1.75; 100, \$12.00.

DANTE. A very attractive and desirable variety. White perianth with scarlet eye. Early flowering. Doz., \$1.75; 100, \$12.00.

HORACE. One of the best in the Poet's type. Perianth pure white, of large size; very conspicuous red eye. Doz., \$1.75; 100, \$12.00.

ORNATUS. C. Large pure white flowers; saffron cup, margined scarlet. Mammoth bulbs, doz., \$1.75; 100, \$12.00.

GRAND SOLEIL D'OR

(Golden Chinese Lily)

Often called "Yellow Paper-White." Rich yellow, with deep red cup.

	Doz.	100
Mammoth bulbs	\$1.50 \$10.00
Top-size bulbs	1.75 13.00
Jumbo bulbs	2.50 18.00

POLYANTHUS NARCISSUS

(Michell's Big Bloom Paper-White)

This is a pure white flowering sort, used extensively for forcing, as it can be brought into bloom in 8 weeks' time.

	Doz.	100	1000
Selected bulbs	\$0.85 \$6.00 \$55.00	
Mammoth bulbs	...	1.00 7.50 70.00	
Top-size bulbs	...	1.25 8.50 80.00	
Jumbo bulbs	1.50 10.00 95.00	

MATERIAL FOR SUCCESSFUL HOUSE CULTURE OF BULBS

	Qt.	4 Qts.	Pk.	Bu.
Bulb Fiber	\$0.15 \$0.45 \$0.75 \$2.00		
Leaf-Mould15 .45 1.00		
Pearl Chips,				
White or Colored.				
1-lb. pkg.,				
15c; 12 pkgs.,				
\$1.50.				
Pebbles15 .50 1.00		
Potting Sand15 .50		
Prepared Potting				
Soil10 .30 .55		



Jonquil

Giant Trumpet

Double

Poetaz

Poeticus

MICHELL'S NARCISSUS MIXTURE FOR NATURALIZING

The cheery Narcissus, one of the loveliest of all spring flowers, is a truly worth-while investment. The bulbs increase readily and can be expected to bloom abundantly for many years. When the bulbs become crowded, dig them up and reset them. Michells offer a wide variety of worth-while kinds. By selecting the various types you can enjoy several weeks of bloom.

For colorful effects in your spring garden, plant Narcissus in groups of six or more. When planted in combination with Grape Hyacinths, Pansies, Violas or English Daisies, they are particularly attractive. Few bulbous plants are better suited to the foreground of the shrub border. Where space permits, Narcissus can be naturalized in sod, provided, of course, that the grass will not be cut until the Narcissus foliage has turned yellow.

Doz. \$1.25, 100, \$9.00; 1000, \$87.50.

ALL PRICES SUBJECT TO MARKET CHANGES

VARIOUS BULBS AND ROOTS

For Outdoor and Indoor Culture

ACONITE, WINTER

(*Eranthis hyemalis*)

A very early spring-flowering bulb with golden yellow blooms. Prefers a moist, shady location. Perfectly hardy. Excellent for the rockery. Height about 6 in. Doz., 50c; 100, \$4.00.

AMARYLLIS

GIANT AMERICAN HYBRIDS. The finest race of Amaryllis in cultivation, exceeding in the size and fine form of their flowers, as well as in the diversity of colors and markings, all former hybrids. We offer mixed colors only.

	Each	Doz.
Selected bulbs	\$0.50	\$5.50
Mammoth bulbs75	8.00
Top-size bulbs	1.00	10.00

ANEMONE - Windflower

BLUE POPPY. A choice selection of blue shades. Large Poppy-shaped, thick-petaled blooms on long stems. Doz., \$1.00; 100, \$7.00.

DE CAEN. Single French varieties in mixed colors. Doz., \$1.00; 100, \$7.00.

HIS EXCELLENCY. Beautiful, large-flowering Poppy Anemone. Deep scarlet; thick petals; long stems. Doz., \$1.00; 100, \$7.00.

ST. BRIGID. Improved form with immense semi-double flowers in many colors. Doz., \$1.00; 100, \$7.00.

SYLPHIDE. A beautiful clear pink. Doz., \$1.00; 100, \$7.00.

THE BRIDE. Large pure white flowers with white centers. Doz., \$1.00; 100, \$7.00.

MICHELL'S SUPERB TUBEROUS-ROOTED BEGONIAS

Our strain is the finest grown. The enormous flowers are of the most exquisite coloring and are produced in great abundance. These can be grown in porch- or window-boxes, or in the garden in semi-shady places; can be started in pots indoors very easily. Plant outdoors in May, in a light, well-drained soil where they will flower uninterruptedly from latter part of June till frost. Ready January-February.

Single Crispa Frilled Begonias

(Large Bulbs)

ORANGE PINK, ROSE SALMON SCARLET WHITE YELLOW

Price of above: Each, 30c; doz., \$3.25; 100, \$25.00.

Double Camellia-Flowered Begonias

(Large Bulbs)

ORANGE PINK, ROSE SALMON SCARLET WHITE YELLOW

Price of above: Each, 30c; doz., \$3.25; 100, \$25.00.

Begonia Pendula

(Hanging-Basket Type)

Unsurpassed for vases, hanging-baskets, porch- and window-boxes. Medium-sized flowers all season.

MIXED COLORS. Each, 35c; doz., \$3.75; 100, \$27.50.

FANCY-LEAVED CALADIUMS

These are grown for us by one of the leading hybridizers. They are charming conservatory plants. Being of a tropical nature, they like a warm temperature. They do quite well outdoors during the summer if planted in a shaded place. The foliage covers a wide range of colors, making a grand display. Bulbs should be started in moss with plenty of bottom heat.

Ask for leaflet on their culture and care.

Extra Highly Colored Named Varieties

3, \$1.00; doz., \$3.50; 100, \$25.00.

Mixed Varieties

An assortment especially blended for us. 3 for 85c; doz., \$3.00; 100, \$22.50.

NOTE: It often happens that the finest colored varieties do not produce the largest bulbs. The bulbs we furnish can be depended on for best results.

CALOCHORTUS

(Mariposa Tulip; Butterfly Tulip)

MIXED COLORS. Our mixture comprises all the pleasing shades of pink, rose, white, lavender, and primrose. Excellent for the rock garden. Height about 1½ feet. Doz., \$1.00; 100, \$6.00.

CHIONODOXA

Glory-of-the-Snow

One of the first flowers to appear in the spring. Used for edging, for planting in masses, or in the rock garden.

If wanted by Parcel Post, add 15c per 100 for postage.

LUCILIAE. Bright blue with white center. Doz., 50c; 100, \$3.50.

SARDENSIS. Very deep blue with white center. Doz., 50c; 100, \$3.50.

THE COLORFUL GIANT CROCUS

Giant Named Crocus

The bulbs of these varieties are very large and each is capable of producing several flowers of large size.

BARON VON BRUNOW. Deep blue. Doz., 65c; 100, \$4.50.

KING OF THE BLUES. Purple. Doz., 65c; 100, \$4.50.

L'INNOCENCE. New. Stem and flower are pure white; giant blooms. Doz., 65c; 100, \$4.50.

PURPUREA GRANDIFLORA. Rich purple. Doz., 65c; 100, \$4.50.

REMEMBRANCE. Dark lavender-blue. Doz., 65c; 100, \$4.50.

STRIPED BEAUTY. An extra-large white flower, evenly striped dark mauve. Doz., 65c; 100, \$4.50.

YELLOW. First size bulbs. Doz., 65c; 100, \$4.50. Mammoth size bulbs, doz., 75c; 100, \$5.50.

GIANT NAMED, MIXED. Doz., 50c; 100, \$3.50.

Autumn-Flowering Crocus

COLCHICUM AUTUMNALE. Autumn-flowering bulbs, producing lavender-colored flowers. Can be grown in partial shade and are excellent among low-growing plants and fine for the rockery. Will also bloom without soil or water by placing in the sun in a dish or saucer. Height, 8 to 10 in. Each, 35c; doz., \$4.00; 100, \$25.00.

CROCUS SATIVUS. Purple-lilac flowers feathered violet; orange anthers. Doz., 75c; 100, \$5.50.

CROCUS ZONATUS. Rose-lilac, yellow center. Doz., 75c; 100, \$5.50.

BABY CALLA

PINK (*Richardia Rehmanni*). Dwarf. Blooms rose-pink, fading to cerise as they mature. An unusual flower. Each, 50c; doz., \$5.50.

WHITE CALLA

(*Aethiopica*)
Lily-of-the-Nile

	Each	Doz.	100
Medium-size bulbs, 1½ to 1¾-in. diam.	\$0.50	\$4.50	\$35.00
Mammoth bulbs, 1¾ to 2-in. diam.75	7.00	45.00
Top-size bulbs, 2 to 2½-in. diam. ...	1.00	9.00	65.00
Jumbo bulbs, 2½ to 3-in. diam.	1.25	13.00	100.00

SPOTTED CALLA

(*Alba Maculata*)

Flowers white. Foliage green spotted white. Each, 50c; doz., \$5.00; 100, \$35.00.

YELLOW CALLA

(*Elliottiana*)

The rich golden yellow flowers are large and massive, and produced in abundance. Foliage green, spotted white.

	Each	Doz.	100
Mammoth bulbs ...	\$0.50	\$5.00	\$35.00
Top-size bulbs75	8.00	60.00
Jumbo bulbs	1.00	10.00	70.00

EREMURUS

(Foxtail Lily; Giant Asphodel)

BUNGEI. Citron-yellow flowers on spikes 5 to 6 feet high. June. Each, \$1.75; doz., \$18.00.

ELWESIANUS. Soft pink flowers on spikes 10 to 12 feet high. June. Each, \$3.00; doz., \$30.00.

HIMALAICUS. Waxy white flowers with golden anthers. Height, 6 to 8 feet. Each, \$1.75; doz., \$18.00.

HIM-ROB. Pale silvery pink flowers. Height, 8 to 10 feet. June. Each, \$2.00; doz., \$22.00.

ROBUSTUS. Rosy pink. Height, 10 feet. June. Each, \$3.00; doz., \$30.00.

SHELFORD. Coppery yellow or orange. Height, 7 to 8 feet. June. Each, \$2.00; doz., \$22.00.

ERYTHRONIUM

(Dog's-Tooth Violet)

TUOLUMNENSIS. Charming woodland plants, also effective in the rock garden. Golden yellow, Lily-like flowers. Green leaves. Height, 8 inches. Doz., \$1.00; 100, \$6.00.

ALL PRICES SUBJECT TO MARKET CHANGES

Michell's

HYACINTHS

*DIRECT FROM
HOLLAND*

Varieties as Illustrated

\$2.75 dozen

\$20.00 per 100

Collection

3 each
5 varieties 15 bulbs **\$3.25**

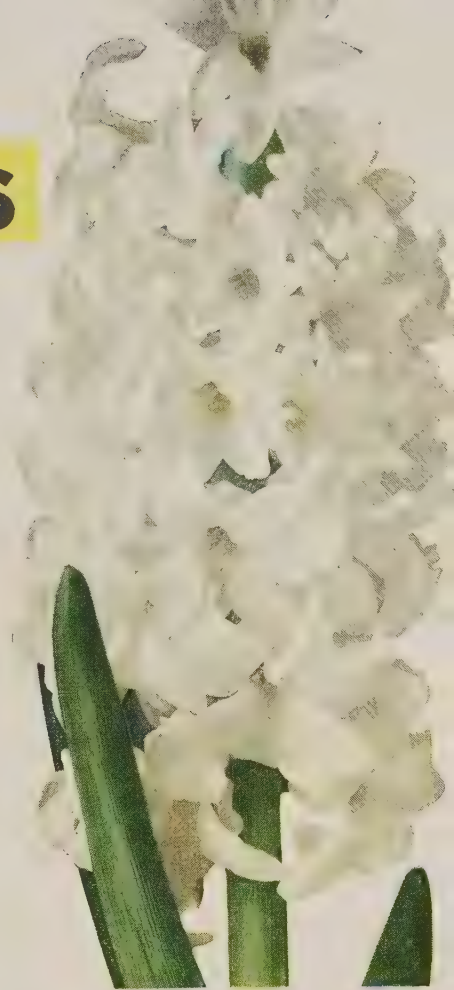
6 each
5 varieties 30 bulbs **6.25**

12 each
5 varieties 60 bulbs **12.00**



Grand Maitre

King of Yellows



L'Innocence

King of The Blues

Marconi



HARBINGERS OF SPRING

For Outdoor and Naturalistic Planting

	Doz.	100
Aconite (<i>Eranthis Hyemalis</i>)	\$0.50	\$4.00
Chionodoxa Luciliae. Bright blue, white center50	3.50
Crocus, Giant Named Mixed.50	3.50
Fritillaria Meleagris, (Guinea Hen Flower).50		4.00
Leucojum Vernum. (Spring Snowflake) . 1.00		6.50
Muscari Plumosum (Grape Hyacinths)75	5.00
Scilla Campanulata Rosea. Pink75	5.00
Scilla Sibirica. Blue85	6.00
Snowdrops, Single (<i>Galanthus</i>)75	5.50
Tulipa Kaufmanniana. (Botanical.)	1.50	10.00

CROCUS BULBS

	Doz.	100
Baron von Brunow. Deep blue	\$0.65	\$4.50
King of Blues. Dark blue65	4.50
L'Innocence. Pure white65	4.50
Purpurea Grandiflora. Rich purple65	4.50
Remembrance. Lavender-blue65	4.50
Striped. White striped mauve65	4.50
Yellow. 1st size65	4.50
Yellow. Mammoth size75	5.50



Fritillaria Meleagris



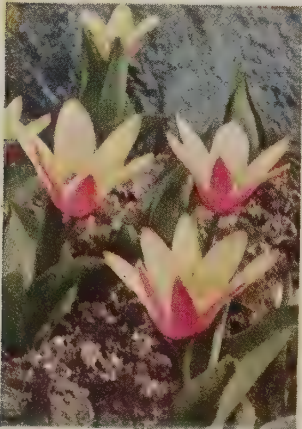
Chionodoxa



Snowdrops



Leucojum



Tulipa Kaufmanniana



Scilla Sibirica



Scilla Campanulata



Eranthis Hyemalis (Aconite)



Muscari Plumosum



Mixed Crocus in The Lawn

COLORED FREESIAS

	Doz.	100
APOTHEOSE. Enormous, waxy, thick-petaled flowers of a gorgeous pink, tinted lavender.		
Mammoth bulbs	\$0.50	\$3.50
Top-size bulbs75	5.00
DOUBLE WHITE, ELDER'S. Flowers are a glistening white on very tall stems; very large and similar to a Gardenia.		
Mammoth bulbs	1.00	7.00
Top-size bulbs	1.25	9.00
ELDER'S RED. Giant red flowers. Very popular.		
Mammoth bulbs75	5.00
Top-size bulbs	1.00	7.00
FLO, ELDER'S. A light violet-blue.		
Mammoth bulbs	1.00	7.00
Top-size bulbs	1.25	9.00
GIANT WHITE, ELDER'S. (Plant Patent No. 17.) Giant pure white blooms on very long stems.		
Mammoth bulbs	1.00	7.00
Top-size bulbs	1.25	9.00
GOLDEN DAFFODIL. Golden yellow with bright orange blotch on lower lip.		
Top-size bulbs	1.00	7.00
Jumbo bulbs	1.25	9.00
GOLDEN WONDER. A large, strong-growing clear yellow.		
Mammoth bulbs	1.00	7.00
Top-size bulbs	1.25	9.00
JUDY, ELDER'S. Wonderful double, golden yellow Freesia. A large-flowering type, excellent for forcing.		
Mammoth bulbs	1.00	7.00
Top-size bulbs	1.25	9.00
MISS BLANCHE BLUE. (Plant Patent No. 98.) Deep bluish lavender flowers of extra-large size.		
Mammoth bulbs	1.00	7.00
Top-size bulbs	1.25	9.00



Freesias

FREESIAS -Continued

	Doz.	100
ORCHIDEA. Soft pearly orchid with yellow throat; large flower.		
Mammoth bulbs	\$1.00	\$7.00
Top-size bulbs	1.25	9.00
PURITY (Superflora). Our strain is the true improved type, producing large, glistening, pure white flowers on long stems.		
Top-size bulbs	1.25	9.00
Jumbo bulbs	1.50	11.00
ROSY MORN, ELDER'S. Beautifully blended rose-pink. Mammoth bulbs ...	1.00	7.00
SUNSET. A new color in Freesias, being a flame-orange.		
Mammoth bulbs75	5.00
Top-size bulbs	1.00	7.00
RAINBOW MIXTURE.		
Mammoth bulbs75	5.00



Fritillaria Imperialis

FRITILLARIA Imperialis (Crown Imperial)

A majestic plant, producing, early in spring, stout stems 3 to 4 feet long with a crownlike cluster of gorgeously colored bell-shaped flowers at the top. Ideal for planting in hardy borders.

MIXED COLORS. 75c each; doz., \$6.00.

FRITILLARIA Meleagris (Guinea-Hen Flower; Checker Lily)

Dwarf, spring-flowering plants with large, pendent, bell-shaped flowers. Excellent for pot culture and valuable for large groups in the garden border, also for the rock garden.

MIXED. Doz., 50c; 100, \$4.00.

BABY GLADIOLUS

For Forcing

An extremely popular flower of marvelous grace and beauty. Wonderful for forcing.

	Doz.	100
CARDINAL. Rich red ...	\$1.00	\$7.00
PEACH BLOSSOM. Soft pink	1.00	7.00
PINK PERFECTION. A new rose-pink	1.00	7.00
SPITFIRE. Deep reddish salmon	1.00	7.00
THE BRIDE. Pure white ..	1.00	7.00

GLOXINIAS

Ready January-February

Gorgeous plants for either the conservatory or garden. They prefer a moist soil and a shady situation. Bulbs may be started as early as January, but should not be set outdoors until May 15th. We offer extra-fine, large bulbs.

	Each	Doz.	100
BLANCHE DE MERU. Rose-pink ..	\$0.50	\$5.00	\$40.00
EMPEROR FREDERICK. Red, striped white50	5.00	40.00
EMPEROR WILLIAM. Purple, striped white50	5.00	40.00
ETOILE DE FEU. Scarlet50	5.00	40.00
MONT BLANC. White50	5.00	40.00
ROI DES ROUGES. Dark crimson50	5.00	40.00
TIGRINA. Spotted. .50	.50	5.00	40.00
VIOLACEA. Light purple50	5.00	40.00

GRAPE HYACINTHS

(Muscari)

Beautiful early spring-flowering bulbs for planting in masses or in the rock garden, in either shade or sun. Once planted they multiply rapidly and send up flower spikes by the score each year. Also adapted for growing indoors. Perfectly hardy. Height, 6 to 8 in.

If wanted by Parcel Post, add 15c per 100 for postage.

BOTRYOIDES ALBUS. White. Doz., 75c; 100, \$5.00.
HEAVENLY BLUE. Sky-blue. Doz., 75c; 100, \$5.00.
DARK BLUE. Doz., 75c; 100, \$5.00.
PLUMOSUM (Feathered Hyacinth). Handsome, feathery plumes of violet-colored flowers. Ideal for rock garden. Doz., 75c; 100, \$5.00.



Muscari

VARIOUS BULBS AND ROOTS



Dutch Iris

DUTCH IRIS

(Iris xiphium hybridum)

D. HARING. Grayish white, tinted lilac; falls pure white. Large flower. Early. Doz., \$1.50; 100, \$10.00.

WHITE EXCELSIOR. Immense flowers of purest white. Very early. Doz., \$1.50; 100, \$10.00.

YELLOW QUEEN. Standards and falls golden yellow. Thin wiry stems. Doz., \$1.25; 100, \$9.00.

IRIS FILIFOLIA

IMPERATOR. Clear deep blue; producing large, elegant flowers. Large bulbs, doz., \$1.25; 100, \$9.00.

IRIS TINGITANA

WEDGEWOOD. A very free-blooming variety, producing enormous deep blue flowers on long, strong stems. Very early. Large bulbs, doz., \$1.50; 100, \$10.00. Jumbo bulbs, doz., \$2.00; 100, \$12.00.

ENGLISH IRIS

KING OF THE BLUES. Brilliant deep purple-blue of striking effect. Doz., \$2.25; 100, \$15.00.

OTHELLO. A beautiful shade of rich wine-red. Doz., \$2.25; 100, \$15.00.

PRINCE ALBERT. Bright lavender-blue, very delicate and effective. Doz., \$2.25; 100, \$15.00.

SUNSET. A delicate lavender-pink. Doz., \$2.25; 100, \$15.00.

TRICOLOR. Standards purple; falls white overlaid with bright blue. Doz., \$2.25; 100, \$15.00.

MIXED. Doz., \$2.00; 100, \$13.00.

IXIAS

A charming little conservatory bulb, but may also be planted outdoors, if placed in a protected location in well-drained soil with plenty of covering during the winter. This bulb produces long, slender, graceful spikes of beautiful blooms. Its colors are rich, varied, and beautiful, the center always differing in color from the other parts of the flower, so that the expanding blossoms present a picture of gorgeous beauty. Desirable for pots.

75c per doz.; \$5.00 per 100; \$40.00 per 1000.

LACHENALIA

A newer bulb in this country but well known in England as the Cape Cowslip. They produce spikes of 12 to 18 slender tubular flowers about 1 inch long, resembling a French Roman Hyacinth. Average length of stem 12 to 15 inches. An excellent pot plant, fine for cutting. Culture same as for Freesia.

AUREA. Beautiful large golden yellow pendulous flowers, about 25 to a stem. Very bright and attractive pot plant. Doz., \$2.25; 100, \$16.00.

LEUCOJUM

VERNUM. Spring Snowflake. Pretty bulbous plant similar to the Snowdrop but larger and stronger growth. Beautiful white flowers, tipped with green. Height, 8 to 10 inches. Doz., \$1.00; 100, \$6.50.

ORNITHOGALUM

ARABICUM. Star of Bethlehem. An attractive flowering bulb for indoor or outdoor culture. Petals pure white, streaked light green with a black center. Very fragrant. Height, 2 feet. 3 for 50c; doz., \$1.50; 100, \$10.00.

OXALIS

	Doz.	100
BOWEI. Pink	\$0.50	\$3.50
BUTTERCUP. Yellow50	3.50
LAVENDER (Grand Duch- ess)50	3.50

RANUNCULUS

An attractive flower resembling a giant double Buttercup or double Poppy. Easily grown in pots for winter blooming or in cold frames for spring. Height 12 to 15 inches.

CLAREMONT HYBRIDS, MIXED. An improved choice mixture of selected colors and shades. Doz., \$1.00; 100, \$7.00.

	Doz.	100
TECOLOTE GIANTS		
Red Shades	\$1.00	\$7.00
Yellow Shades	1.00	7.00
Pink Shades	1.00	7.00
Orange Shades	1.00	7.00
White Shades	1.00	7.00
Mixed. A balanced blend of all colors. The huge flowers run mostly to the full double form90	6.00

ALL PRICES SUBJECT TO MARKET CHANGES

SCILLAS

(Squills; Wood Hyacinths; Bluebells, etc.)

CAMPANULATA ALBA. White. Doz., 75c; 100, \$5.00.

CAMPANULATA, BLUE. Doz., 75c; 100, \$5.00.

CAMPANULATA ROSEA. Pink. Doz., 75c; 100, \$5.00.

SIBIRICA. Blue. Doz., 85c; 100, \$6.00.

SNOWDROPS - Galanthus

One of the earliest bulbs to bloom in the spring. Thrives in both sun and shade and in almost any situation or soil. Excellent for banks, edgings, or the rockery. Perfectly hardy. Height 6 to 8 inches.

DOUBLE. Pure white. 85c per doz.; 100, \$6.50.

SINGLE. Pure white. Doz., 75c; 100, \$5.50.

SPARAXIS

FINEST MIXED. Delightful spring-blooming Cape bulbs of the Ixia group, their beautiful flowers being borne on graceful spikes about 6 to 8 inches high, of the brightest shades. They are tigered, blotched, spotted, streaked and flushed, a complete riot of color. They are also excellent for conservatory and indoor treatment. For the southern rock garden they are indispensable. Protect in cold climates. Doz., 65c; 100, \$4.00.

SPIRAEA - Astilbe

Ready in December

DEUTSCHLAND. Purest white. Strong grower and good forcer. Each, \$1.00; Doz., \$10.00.

GLADSTONE. Popular variety. Immense trusses of snow-white flowers, produced in great abundance. Each, \$1.00; doz., \$10.00.

GLORIA SUPERBA. Dense, feathery plumes of a lovely brilliant dark pink color with a soft lilac shade. Each, 75c; doz., \$8.00.

PEACH BLOSSOM. A very lovely shade of peach-blossom-pink. Free flowering. Each, 75c; doz., \$8.00.

QUEEN ALEXANDRA. Beautiful shade of pink. Very desirable. Each, 75c; doz., \$8.00.

RHINELAND. A very fine forcing variety. Flowers bright crimson, shading to salmon. Each, 75c; doz., \$8.00.

STERNBERGIA

LUTEA MAJOR. A very effective autumn-flowering bulbous plant producing Crocus-like flowers of a rich golden yellow. The bulbs make a charming decoration if planted in bowls or pots and flower a few weeks after planting. Out-of-doors the Sternbergia likes a warm, well-drained situation on banks or borders, where it should be left undisturbed. The bulbs should be planted 9 inches deep, and in cold districts a covering of dry litter should be given in winter. Fine for the rock garden. Doz., \$2.00; 100, \$15.00.

HARDY GARDEN AND FORCING LILIES

CROFT LILY BULBS

This is really the best Lily produced in this country. It is absolutely clean and free from disease. Can be grown in a cool temperature and will produce many blooms. A truly splendid Lily.

	Each	Doz.	100
8 to 9-in. circ..	\$1.25	\$14.00	\$100.00
9 to 10-in. circ..	1.75	20.00	150.00
10 to 11-in. circ..	2.25	25.00	200.00

MICHELL'S EASTER LILY BULBS FOR INDOOR CULTURE "Special Brand"

LILIUM HARRISI

True Bermuda Easter Lily Ready Now

	Each	Doz.	100
8 to 10-in. circ..	\$0.75	\$ 8.50	\$ 65.00
9 to 11-in. circ..	1.25	14.00	100.00
11 to 13-in. circ..	2.00	22.00	
13 to 15-in. circ..	3.00	35.00	



Lilium Regale

LILIUM REGALE Lilium Myriophyllum

Large flowers with centers flushed golden yellow, shading to creamy white at outer edges; the reverse of the flowers is streaked with brown, shaded a pearly tint. Its sturdy stems are 3 to 5 feet high. Plant in fall or early spring, 8 to 9 inches deep. Blooms in July. (Ready in October.)

	Each	Doz.	100
Large selected bulbs.			
7 to 8 in. in circ...	\$0.35	\$3.50	\$25.00
Mammoth bulbs.			
8 to 9 in. in circ...	.50	5.00	35.00
Top-size bulbs.			
9 to 10 in. in circ...	.65	6.50	40.00
Jumbo bulbs.			
10 to 11 in. in circ..	.75	8.00	60.00

LILY-OF-THE-VALLEY PIPS

FOR OUTDOOR PLANTING ONLY

Bundles contain 25 good-sized pips, with good root-growth, all of which will flower with the proper care. The best of the stock is being selected for us. We can make shipment of these up to April 1st. Bundles of 25 pips, \$1.00; doz. bundles, \$10.00.

MISCELLANEOUS HARDY LILIES

Each Doz. 100

CANADENSE (Canadian Bellflower Lily). Bright yellow flowers, spotted black inside. Height 3 to 5 feet. June\$0.25 \$2.75 \$20.00

CANADENSE RUBRUM. Crimson with black spots. Height 3 to 4 feet. August35 3.50 25.00

ELEGANS. MIXED. Shades of orange. Fine for the rock garden. Height, 2 ft. June, July35 3.50 25.00

HENRYI (Yellow Speciosum Lily). Distinct orange-yellow flowers. Often 7 ft. July, August. Mammoth bulbs50 5.50 40.00
Top-size bulbs75 8.00 55.00

PARDALINUM GIGANTEUM (Sunset Lily). A California variety bearing 12 to 20 strongly recurved flowers of bright orange, spotted dark crimson. Height, 4 to 5 feet. July..... .40 4.00 30.00

SPECIOSUM ALBUM. The best late-flowering, pure white, hardy garden Lily of easy culture. Its graceful stems and foliage are set off to wonderful advantage by the pure white blooms. Height 3 to 4 feet. September. Large bulbs 1.00 11.00 85.00
Mammoth bulbs .. 1.25 14.00 100.00

SPECIOSUM RUBRUM OR ROSEUM. Delicate pink, almost white, spotted red. One of the old garden favorites. Height, 4 to 5 feet. September. Mammoth bulbs ... 1.00 10.00 75.00
Top-size bulbs 1.25 14.00 100.00
Jumbo bulbs 1.50 16.00 120.00

SUPERBUM (Turk's-Cap Lily). Grows from 4 to 5 feet high and produces from 15 to 25 orange-red flowers on a stalk. August50 5.00 35.00

TENUIFOLIUM (Coral Lily). Grows 1½ feet high, with clusters of brilliant scarlet, starlike flowers on wiry stems . .25 2.75 20.00

TESTACEUM. Many flowers of warm nankeen - yellow. Base rooting. Height, 4 to 5 feet. June, July. Plant 2 to 3 inches deep..... 1.35 15.00

WILLMOTTIAE. A vivid orange-red with recurved petals and many small brown spots. Height, 4 to 5 feet. July, August40 4.00 30.00



Lilium Speciosum Rubrum

LILIUM HOWARDI BULBS

This variety is similar to Harrisi with the exception that it can be brought into bloom much earlier. Quite profuse in bloom and flowers are stronger which is a distinct advantage.

	Each	Doz.	100
8 to 10-in. circum..	\$1.00	\$10.00	\$ 75.00
9 to 11-in. circum..	1.50	15.00	115.00
10 to 12-in. circum..	2.25	25.00	

LILIUM CANDIDUM (Hardy)

ST. JOSEPH'S, MADONNA, OR ANNUNCIATION LILY. Pure white and very fragrant.

	Each	Doz.	100
Selected bulbs.			
20-22 ctm.	\$0.50	\$5.50	\$40.00
Mammoth bulbs.			
22-24 ctm.65	6.50	50.00
Top-size bulbs.			
24-26 ctm.75	8.00	60.00
Jumbo bulbs.			
26-28 ctm.	1.00	10.00	75.00

LILIUM PHILADELPHICUM (Orange Cup Lily)

Orange-red with purple spots. Leaves whorled or scattered. Will thrive in either shaded or open locations. Height, 1 to 3 feet. July and August. Each, 40c; doz., \$4.50, 100, \$30.00.

LILIUM PHILIPPINENSE FORMOSANUM

This wonderful Lily produces large pure white blooms tinted with rose on the outside. In size and form it resembles the Easter Lily, with a similar delightful fragrance. It is a profuse bloomer and invaluable as a cut flower. Perfectly hardy in cold climates if given a mulch in the fall. Each, 40c; doz., \$4.00; 100, \$30.00.

MICHELL'S HARDY PERENNIAL PLANTS

Perennial Plants have a fascination that captures the imagination, garden favorites and justly so, for there is no time during the entire flowering season when some variety is not in bloom. Beginning in early April they provide a constantly varying pageant of color through the summer. They appear year after year and as each variety has a fixed time for blooming be sure to make careful selection. An effective combination is Peonies with Daffodils and Lilies. The rooting system of these will not interfere with each other, while the colors will enhance the beauty of your garden.

We wish to emphasize the necessity of planting at the proper time. To guide your planting schedule we have compiled a list of Hardy Perennial Plants that should be planted in October and November.

AJUGA - Bugle

REPTANS. The well-known blue variety. Will stand sun or shade. 6 in. Each, 50c; 3 for \$1.30; 10 for \$4.00.

ALYSSUM

SAXATILE COMPACTUM. Basket of Gold. An excellent, low-spreading plant for rockery or border, growing about 10 inches high. Masses of golden yellow flowers in May. 3 for \$1.30; 10 for \$4.00.

SAXATILE COMPACTUM FL.-PL. A double-flowering form of the well-known Basket of Gold. 3 for \$1.60; 10 for \$5.00.

MICHELL'S MODERN HYBRID DELPHINIUMS

In every garden of distinction you will find a generous use of Modern Delphiniums.

They are majestic in the towering splendor of their perfect spikes, in their range of exquisite blues, purples, and mauves.

The plants we offer are carefully selected seedlings of the English Prize-winning Strains checked as to type, while in bloom.

PACIFIC GIANTS. This new strain, developed in California, carries a fine range of colors and the structure of the best foreign varieties. Our plants have been grown from the originator's own stock. Strong plants. Each, 90c; 3 for \$2.25; 10 for \$6.50. Extra selected plants, \$1.25 each; 3 for \$3.00; 10 for \$9.00.

MICHELL'S PACIFIC GIANTS DELPHINIUMS Hollyhock Strain

A welcome innovation is the following offer of the Hollyhock Delphiniums, released in 4 separate color groups. These plants are grown from the identical strain which comprises our well-known Named Delphiniums. The plants are all heavy, field-grown.

Light Shades, Mauve Shades, Intermediate Shades, Dark Shades, or Mixed. Each, \$1.00; 3 for \$2.75; 10 for \$7.50.

MICHELL'S SPECIALS. These Delphiniums have been grown and selected for us under our supervision. The seeds were sown early last spring and transplanted under favorable conditions. The late summer blooms enabled us to rogue them to the following color groups:

Cameliard Series. Pure lavender selfs with white bee.

Galahad Series. Pure white.

Guinevere Series. Light pink-lavender.

Round Table Series. A combination of various shades of blue and lavender.

3 of one series, \$3.50.
10 of one series, or assorted, \$9.00.

ANCHUSA - Sea Bugloss

MYOSOTIDIFLORA. A distinct dwarf variety from the Caucasus Mountains, with clusters of pretty blue Forget-me-not-like flowers in May. 1 ft. 3 for \$1.35; 10 for \$4.00.

ANEMONE - Windflower

Spring Flowering Kinds

PULSATILLA. Pasqueflower. The violet-blue flowers are followed by silky seedpods. A picturesque and curious plant. 10 to 12 in.

PULSATILLA ALBA. A dainty white-flowering form. 3 for \$1.30; 10 for \$4.00.

Anemone Japonica varieties (fall flowering), are supplied in the spring only.



STANDARD HARDY DELPHINIUMS

BELLADONNA, IMPROVED CLIVEDEN BEAUTY. A magnificent strain of the pure blue Delphinium, producing long spikes during June-July, and in the fall. Each, 60c; 3 for \$1.60; 10 for \$5.00.

BELLAMOSUM. A dark blue form of Belladonna, with which it is identical except in color, which is a rich deep blue. Each, 60c; 3 for \$1.60; 10 for \$5.00.

CHINENSIS GRANDIFLORUM, BLUE MIRROR. A sensationally beautiful dwarf blue Delphinium resembling the Chinese forms, but the flowers are flat saucers of aquamarine, without spurs. The habit is compact, forming neat 18-inch bushlets and the sprays are produced in endless profusion from early May until frost. This is a true perennial and is exceedingly hardy, wintering successfully at low temperatures of 16 below zero. A true joy for every garden. Each, 60c; 3 for \$1.60; 10 for \$5.00.

MICHELL'S GOLD MEDAL HYBRIDS, MIXED. The plants are of strong vigorous habit, with large flowers on long spikes. Each, 60c; 3 for \$1.60; 10 for \$5.00.

PARAMOUNT HYBRIDS. These are also selections from our Hollyhock strain but can be supplied in mixed colors only. Each, 90c; 3 for \$2.25; 10 for \$6.50.

AQUILEGIA - Columbine

COERULEA. 2 ft. The famous Rocky Mountain Blue Columbine.

LONGISSIMA. Flowers of delicate pale yellow with spurs 4 inches long, produced abundantly from late May on.

LONGISSIMA HYBRIDS. The achievement of English hybridizers! They have crossed the bewildering beauty of the finest Mrs. Scott Elliott's Hybrids with the fantastic spurs of Longissima. Available in assorted colors only. 2½ to 3 feet. May-June.

MRS. SCOTT ELLIOTT'S STRAIN. Outstanding for its wide range of color. We offer these long-spurred Columbines with justifiable pride.

All Aquilegias: 3 for \$1.30; 10 for \$4.00.

ARABIS - Rock Cress

ALPINA FL.-PL. The double white Rock-Cress, flowering from April until June. 3 for \$1.30; 10 for \$4.00.

ARTEMISIA

SILVER KING. Sometimes called the "Ghost Plant." Has silvery white, finely cut leaves. Excellent in the perennial border to accentuate the beauty of flowering plants. 3 ft. 3 for \$1.30; 10 for \$4.00.

CIMICIFUGA - Bugbane

This variety will help to solve many a problem in the shady garden. Plant in large groups, and enjoy a delightful display of white spirelike flowers for several months.

RACEMOSA. 4 to 6 ft. July, August. 3 for \$1.30; 10 for \$4.00.

DIANTHUS - Pinks

BARBATUS. See Sweet William.

BOBBIE. A deep pink gem.

CHEERFULNESS. New. A pleasing semi-double white with crimson markings. Each, 75c; 3 for \$2.00; 10 for \$6.00.

LITTLE JOE. A delightfully fragrant compact plant with vivid red flowers.

MEG GARDNER. 15 in. A recent introduction bearing large white flowers with distinct red centers. June, July.

OLD SPICE. Pat. 499. Carnation-like salmon-pink flowers, clove-scented. Each, 60c; 3 for \$1.60; 10 for \$5.00.

PURITY. A pure white.

TINY RUBIES. The miniature plants produce Carnation-like flowers on stems 4 to 5 inches high. In full sun the color is pink; with partial shade it approaches rose. It is a "must" for your rock garden.

WHITE RESERVE. Pure white with strong stems. An ideal Dianthus for cutting.

NEW ROSE. Unique hybrids with double blooms of red, rose, pink and salmon. Mixed colors only. Each, 75c; 3 for \$2.00; 10 for \$6.00.

All Dianthus, except where noted: Each, 50c; 3 of one variety, \$1.30; 10 for \$4.00.

This Page Contains Some of the Popular Perennials

DICENTRA (Dielytra)

***EXIMIA**. Fringed Bleeding-Heart. A dwarf-growing variety with beautiful finely cut foliage and showy pretty pink flowers. Each, 50c; 3 for \$1.30; 10 for \$4.00.

SPECTABILIS. Bleeding Heart; Seal Flower. Its long sprays of graceful, heart-shaped flowers are always attractive. Each, 90c; 3 for \$2.25; 10 for \$6.50.

SWEETHEART. A white form of dwarf Bleeding Heart. Finely cut foliage. Each, \$1.50; 3 for \$3.50; 10 for \$9.00.

DIGITALIS - Foxglove

GIANT SHIRLEY, MIXED. These are a genuine Shirley production of extraordinary size and vigor. The flower heads are over 3 feet long, crowded with large, bell-shaped blossoms, ranging in color from white and shell-pink to deepest rose. Each, 50c; 3 for \$1.30; 10 for \$4.00.

DORONICUM Leopard's-Bane

These gleaming yellow Daisy-like flowers are a top-notch source of color in the spring border and rock garden. For best results, grow them in partial shade.

MME. MASON. Compact in habit; noted for its large bloom. April, May. Each, 60c; 3 for \$1.60; 10 for \$5.00.

FUNKIA (Hosta)

Plantain Lily, Day Lily

COERULEA LANCEOLATA. Requires a minimum of care. The plants with their lush foliage are always nice, and the flowers are lovely during summer. Each, 70c; 3 for \$1.60.

SUBCORDATA GRANDIFLORA. Very large, pure white, Lily-shaped, fragrant flowers. 2½ to 3 ft. Aug., Sept. Each, 90c; 3 for \$2.25; 10 for \$6.50.

UNDULATA MEDIA PICTA. Green and white variegated foliage. Purple flowers. 2 ft. July. Each, 50c; 3 for \$1.30; 10 for \$4.00.

GAILLARDIA Blanket Flower

GRANDIFLORA. Dark brown center, surrounded with a rich orange disc; petals on outer edges yellow. 3 for \$1.30; 10 for \$4.00.

GYPSOPHILA Baby's Breath

BRISTOL FAIRY. A wonderful improvement over *G. paniculata* fl.-pl. It is a distinct new form, producing immense panicles of pure white, double flowers very early in the season and continuing until frost. Each, 90c; 3 for \$2.25; 10 for \$6.50.

OLDHAMIANA. Abundant masses of white flowers delicately tinted pink. In bloom from August until late fall. 3½ ft. Each, 70c; 3 for \$1.60; 10 for \$5.00.

***REPENS**. Beautiful trailing plant for the rockery, with clouds of small white and pink flowers during July and August. Each, 70c; 3 for \$1.60; 10 for \$5.00.

HELLEBORUS Christmas Rose

They grow best in rich soil and a shady location; unexcelled for the beauty of their flowers, their evergreen foliage and their attractive appearance the year round.

***NIGER**. 1 ft. Single white blooms flushed with pink, on sturdy stems. December to March. Each, \$1.50; 10 for \$13.50.

HEUCHERA - Coralbells

Light soil and full sun suit them best, but they will make an admirable show in partial shade.

BRIZOIDES. 18 to 24 in. Vigorous grower; light pink flowers. May-August.

ROSAMONDE. Pleasing coral-pink flowers on long stems. 2 ft. June-Sept.

SANGUINEA HYBRIDS. A wonderful range of colors from white through the various shades of pink to deepest red.

All Heucheras: Each, 60c; 3 of one variety, \$1.60; 10 for \$5.00.

HOLLYHOCKS

DOUBLE. Our strain of these is very fine, and we offer them in separate colors only: Yellow, Crimson, Pink, and White.

SINGLE, MIXED. They are of stronger growth than the double-flowering type and consequently make a better showing. We can supply these in mixed colors only.

Above Hollyhocks: Each, 50c; 3 for \$1.30; 10 for \$4.00.

HEMEROCALLIS (Daylily)

New Giant-Flowering Hybrids

AUGUST PIONEER. Chrome-orange blooms of medium size. Especially valuable for its late period of bloom—early August through September. 2½ ft. Each \$1.00; 3 for \$2.75.

BAGDAD. Large flowers borne on plants of considerable height; coppery red petals with orange throat. 5 ft. July. Each, \$1.00; 3 for \$2.75.



Hemerocallis

BOUTONNIERE. Flourishing clusters of small flowers. The throat of each is orange-yellow with darker petals. 2½ ft. Aug., Sept. Each, \$1.00; 3 for \$2.75.

CURLY PATE. Medium-sized yellow, cup-shaped flowers with petals curled at the ends. 4½ ft. Each, 90c; 3 for \$2.50.

D. D. WYMAN. Golden yellow with tawny splashes. 3 ft. Late June, July. Each, 60c; 3 for \$1.60.

DOVER. Large; clear orange. 4 ft. June, July. Each, 60c; 3 for \$1.60.

GEORGE YELD. Distinctly large; the outer petals are rich orange-yellow and the inner flushed with rose. 4 ft. July, Aug. Each, \$1.00; 3 for \$2.75.

GOLDENI. Deep golden orange; attractive in form; very free-flowering. 2 ft. Late June. Each, 60c; 3 for \$1.60.

HYPERION. One of the most popular varieties—pale canary-yellow. 3½ ft. July. Each, \$1.00; 3 for \$2.75.

IMPERATOR. A distinct variety with rich orange-red coloring. 4 ft. July, Aug. Each, \$1.00; 3 for \$2.75.

J. R. CRAWFORD. Clear gold. 4 ft. Each, 90c; 3 for \$2.25.

J. R. MANN. Golden yellow. 2½ ft. Each, 60c; 3 for \$1.60.

MANDARIN. Unusually tall and especially lovely in the evenings is this lemon-yellow variety for late summer. 5 ft. Aug. Each, 90c; 3 for \$2.25.

MIKADO. A glamorous combination—orange with a mahogany-red spot on each petal. Occasionally blooms in the fall. 3 ft. June, July. Each, \$1.00; 3 for \$2.75.

MODESTY. Palest yellow; amazing in size. 4 ft. June. Each, 90c; 3 for \$2.25.

MRS. A. H. AUSTIN. The cup-shaped deep orange-yellow blooms are of medium size; most attractive. 2½ ft. Aug. Each, \$1.00; 3 for \$2.75.

MRS. W. H. WYMAN. Best described as pale glistening yellow. 3½ ft. Aug. Each, 60c; 3 for \$1.60.

OPHIR. Its rich golden yellow coloring has made this a favorite variety. 4 ft. July. Each, \$1.00; 3 for \$2.75.

THE GEM. An unusually popular yellow variety; large size. 3 ft. July, Aug. Each, 60c; 3 for \$1.60.

We offer two collections of these lovely Daylilies: A. for the Flower Border of 3-foot width; B. for the wider Flower Border up to 5 feet.

Collection A

6 varieties growing 1½ to 3 ft.

Boutonniere	Mrs. A. H. Austin
D. D. Wyman	J. R. Mann
Goldeni	Mikado

SPECIAL OFFER—\$4.00
(Value \$4.70)

Collection B

6 varieties growing 3 to 5 ft.

Bagdad	Imperator
George Yeld	Ophir
Hyperion	Curly Pate

SPECIAL OFFER—\$5.00
(Value \$5.90)

GARDEN IRIS

These Iris are one of the most easily grown early-flowering perennials. The ideal planting season is August through to October. Should it be necessary to plant in the spring, obtain your supplies as soon as frost is out of the ground. Late spring orders are carried over until the fall planting season in the interest of our customers.

50c each; 3 of one variety, \$1.35; 1 each of 10 varieties, \$4.00, except those marked *.

ALICE HARDING. Soft satin-yellow.

ALTA CALIFORNIA. The tallest of the new yellow Iris.

AMITOLA. Standards, russet; falls, pink.

***ANNE NEWHARD.** A new Pansy-blue. Each, \$2.50; 3 for \$7.00.

***ANGELUS.** Lilac-pink blend. Very desirable. Each, \$1.00; 3 for \$2.75.

***AT DAWNING.** Pink, white and rose blend. Dainty coloring effect. Each, 75c; 3 for \$2.00.

BLACKMOOR. Darkest blue-black-purple.

BLUE TRIUMPH. Lovely pale blue.

***BRAHMIN.** A new intense blue, very much admired. Each, \$1.00; 3 for \$2.75.

***BRONZINO.** Frosty golden bronze, growing to a height of 40 inches. Each, \$1.00; 3 for \$2.75.

CAFE-AU-LAIT. Soft creamy tan self.

***CHINA MAID.** A blend of pink, bronze and lilac. Each, \$1.50; 3 for \$4.00.

CHEERIO. Standards, tan; falls, violet-red. Very fine.

CALIFORNIA GOLD. Tall golden yellow. Fine.

***CITY OF LINCOLN.** The best variegated variety to date. Each, \$2.00; 3 for \$5.50.

***COPPER LUSTRE.** Copper and gold blend. Copper shades in Iris have become favorites with many gardeners. Each, \$1.00; 3 for \$2.75.

CORONET. A blended self of golden tan.

CROWN JEWEL. An unusual tone of burnt orange.

CRYSTAL BEAUTY. Large, white. Planted with blues, makes an effective showing in the Iris garden.

DAUNTLESS. Red-purple, tall and large.

DOG ROSE. Soft pink.

DORE. Daffodil-yellow.

DREAM. Light pink; very popular.

ELMOHR. A tall William Mohr, and an exceptionally fine Iris. Each, \$5.00; 3 for \$14.00.

EL CAPITAN. Violet-lavender, large flower.

***EL TOVAR.** Used in groups of three or five, it makes a massive blend of color. Tall, late. Each, \$1.00; 3 for \$2.75.

ENCHANTMENT. Soft violet. Tall, fine.

EROS. Pale coral-pink; tall, fine.

ETHYLWYNNE DUNBAR. A deep pink self.

EUPHONY. Ruffled copper blend.

FLORA CAMPBELL. Rich russet-red self. Each, \$3.00; 3 for \$8.50.

***FRANK ADAMS.** Standards, yellow; falls, crushed strawberry. Each, \$1.00; 3 for \$2.75.

FRIEDA MOHR. A pink bicolor; large.

***FRIVOLITE.** Shrimp-pink. Each, \$1.00; 3 for \$2.75.

***GOLDEN HIND.** Yellow tinted orange. Each, \$1.00; 3 for \$2.75.

***GREAT LAKES.** A fine new blue; very large blooms. Each, \$2.00; 3 for \$5.50.

GU DRUN. Large white flower.

***HELEN M. RIEDEL.** A blend of fine orange tints. Each, \$1.00; 3 for \$2.75.

***INDIAN HILLS.** Rich true purple. Each, \$1.00; 3 for \$2.75.

JEAN CAYEUX. Golden bronze blend.

KING JUBA. New variegata, much admired. Each, \$1.00; 3 for \$2.75.

***LILAMANI.** Velvety black self; large flower and very striking. Each, \$1.00; 3 for \$2.75.

***LOUVOIS.** Brown and maroon. Each, \$1.00; 3 for \$2.75.

MAISIE LOWE. Dark blue bicolor.

***MARQUITA.** Ivory-yellow, large fine form. Each, \$1.00; 3 for \$2.75.

MARY GEDDES. A pleasing blend of red shades.

***MATTERHORN.** Pure white, very large. The finest white known. Each, \$2.50; 3 for \$7.00.

MEDRANA. Dark smoky claret.

MELCHIOR. Bronze and crimson.

***MISS CALIFORNIA.** Beautiful rose-lilac. Each, \$1.00; 3 for \$2.75.

NARANJA. Beautiful orange-yellow.

PINK SATIN. A true pink Iris.

RAMESSES. A Dykes Medal Winner in Iris. Blend of colors.

RED DOMINION. Standards, red; falls, velvet-red, rich color. 75c each; 3 for \$2.00.

ROSE DOMINION. Rose color.

ROYAL COACH. Bright yellow plicata. Each, \$1.00; 3 for \$2.75.

SAN FRANCISCO. White plicata.

***TREASURE ISLAND.** Olive-yellow, beard deeper shade. Each, \$1.00; 3 for \$2.75.

VENUS DE MILO. A fine white.

***WHITE MARBLE.** White. A sturdy grower. Each, \$1.00; 3 for \$2.75.

WILLIAM MOHR. Large blooms of self pale lilac, veined deep violet, producing a lovely effect.

GARDEN IRIS

Fall Blooming Varieties

These will give you bloom in the spring and again in the fall. No garden should be without some of them. Each, 50c; 3 of one variety, \$1.35.

AUTUMN ELF. Standards, cream; falls, lavender. Very fragrant.

AUTUMN KING, JUNIOR. Blue, lavender, bicolor.

BLACK MAGIC. Blackish purple.

ELEANOR ROOSEVELT. Deep red-violet.

SANGREAL. Yellow.

WHITE AUTUMN KING. Pure white.

ORIENTAL IRIS

These Iris are the most beautiful of all and are becoming more popular each season. They begin blooming about the middle of June and continue for about five to six weeks. While they succeed in almost any soil and under any conditions, they delight in a deep rich moist location.

AZURE. Double; blue with yellow base.

BETTY HOLMES. Large; white, orange center.

CATHARINE PARRY. Blue overlaid rosy red, high tufts in center.

ELEANOR PARRY. Double; claret-red with white and blue flush.

FASCINATION. Double; soft lavender.

GOLDBOUND. White with yellow stripe in center.

MOUNT HOOD. Double; rich royal purple with yellow center.

PURPLE AND GOLD. Double; purple and gold streaked.

PYRAMID. Double; dark violet with bright yellow blotch.

RED RIDINGHOOD. Single; red.

All Oriental Iris, each 75c; 3 for \$2.00.

BEARDLESS IRIS (Siberian Iris)

75c each; 3 for \$2.00.

CAESAR. Dark red-purple.

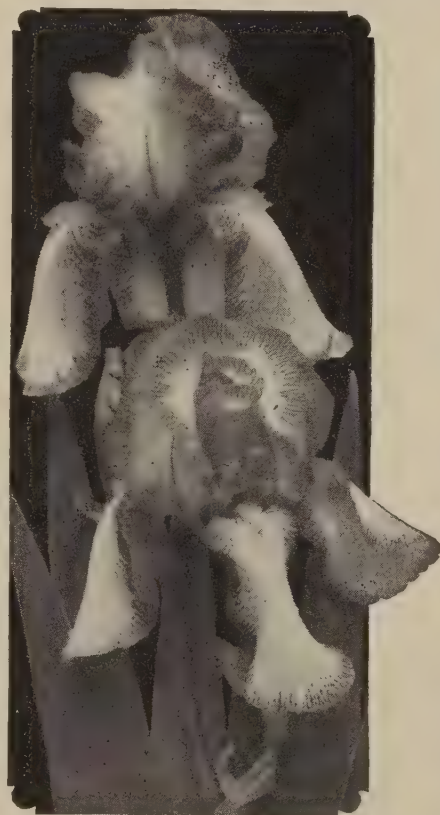
CAESAR'S BROTHER. New blue; fine.

DISTINCTION. Speckled blue and white.

EMPEROR. Dark blue.

PERRY'S BLUE. One of the best light blues.

WHITE DOVE. Beautiful large white.



Garden Iris

*** IBERIS - Hardy Candytuft**

LITTLE GEM. A perfect gem of very dwarf habit, not over 6 inches high, with masses of white flowers in May.

SEMPERVIRENS. Dwarf. Pure white flowers in June. Its uniform neat habit makes it one of our best rock or edging plants.

SNOWFLAKE. Large, pure white flowers on dwarf plants.

Each, 60c; 3 of one variety, \$1.60;
10 for \$5.00.

LUPINUS - Lupine

RUSSELL HYBRIDS. An extraordinary new strain noted for its pastel colors. 3 for \$1.60; 10 for \$5.00.



Lupinus

LYTHRUM

MORDEN'S PINK. 2 to 2½ ft. Masses of rose-pink flowers on narrow spikes. Profuse and continuous bloomer June to September. Excellent for cutting. A hardy variety growing in full sun or partial shade. Each, 90c; 3 for \$2.25.

MERTENSIA

VIRGINICA. Virginia Bluebells. The loveliest of all blue spring-flowering plants. Plant them in broad masses with Daffodils. 15 in. 3 for \$1.25; 10 for \$4.00; 100, \$35.00.

MONARDA - Bergamot

CAMBRIDGE SCARLET. Oswego Tea. Crimson-scarlet. Should be in all herb gardens.

SALMON QUEEN. A pleasing shade of salmon.

All Monarda: Each, 50c; 3 for \$1.30;
10 for \$4.00.

MYOSOTIS

Forget-Me-Not

PALUSTRIS SEMPERFLORENS. Perpetual-flowering Forget-Me-Not. Blue with a yellow throat. 9 in. Each, 50c; 3 for \$1.30; 10 for \$4.00.

NEPETA - Catnip

MUSSINI. A compact grower forming tufts of small violet-blue flowers during July and August. Each, 50c; 3 for \$1.30; 10 for \$4.00.

SIX HILLS GIANT. Masses of strong lavender-blue flowers in late August. 3 for \$1.60; 10 for \$5.00.

For A Spectacular Show of Color, Plant Oriental Poppies in August and September

PAPAVER

Oriental Poppies

Poppies are dug and shipped in fall only; no spring deliveries.

For dazzling, barbaric splendor, the great Oriental Poppies are absolutely unrivaled. Standing out in bold relief, they command attention and admiration. The prevailing color is a vivid orange-scarlet with large black blotches at the base of the petals, and a great mass of bluish black stamens in the heart of the large, cup-shaped flowers.

September and October are fine months to plant Poppies. Given reasonably rich soil and a light winter covering, these strong field-grown plants will be sturdy and free flowering next spring.

All Oriental Poppies, unless otherwise noted: Each, 60c; 3 of one variety, \$1.60; 10 for \$5.00.

BARR'S WHITE. Large, pure white flowers with purplish black spots. A free-blooming and healthy plant. Each, 90c; 3 for \$2.25; 10 for \$6.50.

BEAUTY OF LIVERMORE. The finest dark crimson with black blotch. Free bloomer.

LACHS KONIGEN. One of the finest, strongest-growing deep salmon-pinks.

MAY SADLER. Large; salmon-pink with very large black blotches.

MRS. PERRY. Orange-apricot. Very fine.

ORANGE PERFECTION. Flame-red tinted orange. Strong growing and free flowering.

PURITY. Pure soft white without any spots or markings. Very fine.

SALMON GLOW. Salmon-orange. First blooms are very double but later ones are only slightly so. Each, 90c; 3 for \$2.25; 10 for \$6.50.

SNOWFLAME. A curious bicolor; the lower half of the flower is pure white and the upper half flame-orange. New and different. Each, 90c; 3 for \$2.25; 10 for \$6.50.

WURTEMBERGIA. Large; deep scarlet. Very striking. Each, 90c; 3 for \$2.25; 10 for \$6.50.

WUNDERKIND. Truly a connoisseur's variety is this cerise-colored Poppy. Each, 75c; 3 for \$2.00.



Oriental Poppies

CAVALIER. Crinkly, deep scarlet-red flowers. Strong grower and free in bloom.

CHERIO. Pale pink. Each, 90c; 3 for \$2.25; 10 for \$6.50.

GOLD OF OPHIR. Golden orange, approaching true gold.

HENRI CAYEUX IMPROVED. Old rose shading to burgundy.

JEANNE MAWSON. Sparkling Geranium-pink; large. A beauty.

JOYCE. Charming soft red flowers in great abundance on 48-inch stems. Sturdy growth.

Curtis Giant Poppies

CRIMSON POMPON. Double crimson blooms.

FLAME. Extra-large, flame-red blooms on very long stems. The largest of all Poppies.

FLESH-PINK. Flesh-pink overlaid lavender; large, tall stems. Best when planted in light shade to preserve the lavender tint.

SALMON-PINK. Large blooms. Medium height; heavy stems.

WATERMELON. Deep pink. Very outstanding.

All Curtis Giant Poppies: Each, \$1.50; any 3 for \$4.00.

PHLOX SUBULATA

Moss Pink

Each, 50c; 3 of one variety, \$1.30; 10 for \$4.00.

ALBA. White.

BLUE EYES. Light blue.

BRIGHTNESS. New. Attractive bright pink.

ROSEA. Rose color.

SAMPSON. New. Deep rose with crimson center, distinct and lovely. Also offered under name of Sensation.

VIVID. A compact and showy grower with fiery rose flowers.



Phlox

MISCELLANEOUS HARDY PHLOX

Each, 70c; 3 of one variety, \$1.60; 10 for \$5.00.

CAMLA. An English novelty. The large flowers are glistening pink. Blooms again in the fall.

DIVARICATA. Our beautiful blue native Phlox. Does well in the shade.

PLATYCODON Balloon Flower

GRANDIFLORUM. Deep blue, cupped, star-shaped flowers.

GRANDIFLORUM MARIESI. 18 in. A useful dwarf variety for the foreground of the border. Blue.

GRANDIFLORUM MARIESI ALBA. A white form of the above.

All Platycodons: Each, 60c; 3 of one variety, \$1.30; 10 for \$4.00.

GRANDIFLORUM FL.-PL. A very desirable form, quite double and free flowering. Blue. Each, 75c; 3 for \$2.00.

* PLUMBAGO - Leadwort

LARPENTAE. Plant of dwarf, spreading habit, growing 6 to 8 inches high, covered with deep blue flowers. Each, 60c; 3 for \$1.60; 10 for \$5.00.

POLEMONIUM

BLUE PEARL. Feathery foliage and dense masses of bell-like, lavender-blue flowers 8 to 10 in. April, May. Each, 70c; 3 for \$1.60; 10 for \$5.00.

PRIMULA, HARDY

ACAULIS, BLUE SHADES. Large, single flowers in various shades of blue on strong stems.

MUNSTEAD GIANTS, MIXED. A magnificent strain of bunch Primroses, with flowers of large size in wonderful shades of yellow, from cream to rich orange.

RED SHADES. The above strain in a variety of red hues.

YELLOW SHADES. Yellow varieties of the Munstead Strain.

All Primulas: Each, 75c; 3 of one variety, \$1.60; 10 for \$5.00.

PULMONARIA - Lungwort

ANGUSTIFOLIA AZUREA. Blue Cowslip. Grows about 1 foot high and is one of the first to bloom in early spring. Flowers are a deep Gentian-blue. Each, 70c; 3 for \$1.60; 10 for \$5.00.



Primula, Munstead's Giant

RUDBECKIA

PURPUREA, THE KING. A crimson-red form that can be combined effectively with White Lustre. Each, \$1.00; 3 for \$2.75.

WHITE LUSTRE. This new Rudbeckia we feel confident will take its place as an important addition in many perennial gardens. You can count on White Lustre to reach 3 feet in height. Blooms freely on sturdy stems from late June to September. Each, \$1.00; 3 for \$2.75.

SEDUM

SPECTABILE. A pretty, erect-growing variety with broad, light green foliage and immense heads of showy, rose-colored flowers during the autumn. 1½ ft.

SPECTABILE, BRILLIANT. A rich-colored form of the above, being bright Amaranth-red.

Above Sedums: Each, 60c; 3 for \$1.30; 10 for \$4.00.

THALICTRUM

Meadow Rue

ADIANTIFOLIUM. A beautiful variety with foliage like the Maidenhair Fern and miniature white flowers in June and July. 1½ to 2 ft. 3 for \$1.30; 10 for \$4.00.

LAVENDER MIST. Large loose flower panicles of lavender-purple. Each, 75c; 3 for \$2.00.

VERONICA - Speedwell

BLUE SPIRE. A hybrid of *V. longifolia* subsessilis and *V. spicata* which has retained the glorious dark color of Subsessilis. Each, 75c; 3 for \$2.00; 10 for \$5.00.

***INCANA.** Bright silvery foliage with spikes of amethyst-blue flowers during July and August. 1 ft. Each, 60c; 3 for \$1.30; 10 for \$4.00.

LONGIFOLIA SUBSESSILIS. Japanese Speedwell. The handsomest blue-flowered plant we know, growing to a height of 2 feet and completely studded with spikes of blue flowers; fine for cutting. Aug.-Oct. 3 for \$1.60; 10 for \$5.00.

***RUPESTRIS, HEAVENLY BLUE.** Dwarf and spreading. Flowers very early, of an exquisite shade of blue. Each, 70c; 3 for \$1.75; 10 for \$5.50.

***RUPESTRIS, TRUE BLUE.** Literally covers itself with blossoms of intense blue during June and July. 1 ft. Each, 70c; 3 for \$1.75; 10 for \$5.00.

VIOLA ODORATA Sweet Violet

ROYAL ROBE. A distinct addition to the Violet family that deserves a place in your shady rock garden or as a ground cover. Flowers are a lustrous shade of violet-blue. A dozen of these plants will furnish quantities of bloom during early winter and early spring, a time when cut flowers are highly prized. 3 for \$1.30; 10 for \$4.00.



Viola Odorata, Royal Robe

BEAUTIFUL RAINBOW

Special Collection Offer of the Hardy Garden Iris, which will give abundant blooms if planted this fall.

IRIS

- 1 Each of 5 Iris varieties pictured, \$2.00
- 3 Each of 5 Iris varieties pictured, 5.25



Jean Cayeux



Blackamoor



Rameses

Their grace and loveliness, their unusual charm, and fascinating colors bring a new gardening thrill to every flower lover.



California Gold



Pink Satin

Garden Peonies



Top - Lady Alexandra Duff
 Center - Duchesse de Nemours
 Bottom - Philippe Rivoire



Michell's Modern Hybrid Delphiniums

In every garden of distinction you will find a generous use of Modern Delphiniums.

They are majestic in the towering splendor of their perfect spikes, in their range of exquisite blues, purples, and mauves.

The plants we offer are carefully selected seedlings of the English Prize-winning Strains checked as to type, while in bloom.

Pacific Giants. This new strain, developed in California, carries a fine range of colors and the structure of the best foreign varieties. Our plants have been grown from the originator's own stock. Strong plants. Each 90c; 3 for \$2.25; 10 for \$6.50. Extra selected plants, \$1.25 each; 3 for \$3.00; 10 for \$9.00.

Selected Peonies

Exceptionally fine varieties of proven merit.

Once established these superior Peonies will give an abundance of bloom year after year.

	Each
Lady Alexandra Duff	\$1.50
Duchesse de Nemours	1.00
Philippe Rivoire	3.50
Collection of 3 plants as illustrated ..	5.50

MICHELL'S GIANT-FLOWERING PEONIES

Our Peonies are strong, 3- to 5-eye divisions. A pleasing combination is to use Daffodils and hardy Lilies among the Peony group, to give color in the border and garden in spring, summer and fall.

RECOMMENDATIONS FOR PLANTING: The ground should be well prepared to a depth of 12 inches. Incorporate coarse bonemeal and avoid any animal manure near the roots. When planting lay the roots in their natural position with the eyes about 2 inches below the surface. Cover with salt hay after the ground is frozen.

SHIPPING SEASON: SEPTEMBER UNTIL GROUND IS FROZEN.

Pink and Rose Shades

CORNELIA SHAYLOR. Shell-pink. A fine late variety. Each, \$2.00; 3 for \$5.50.

DENIS DEBATENE. A splendid show flower of salmon-pink. It is of medium size, mildly fragrant, with good stems and foliage. Desirable for cutting. Each, \$3.00; 3 for \$8.25.

EDULIS SUPERBA. The only Peony offered here that is rated under 8, and there is no reason why it should carry this low rating, for it is really a good Peony. Early, free flowering, and a fine cut flower in the dark pink class. Each, \$1.00; 3 for \$2.75.

ELISA. Hydrangea-pink. Each, \$1.50; 3 for \$3.75.

ELISE RENAULT. An unusual shade of lilac in Peonies. Should be grown in all Peony borders; late. Each, \$2.50; 3 for \$6.75.

EXQUISITE. Rosy pink, fragrant, tall. Each, \$1.50; 3 for \$3.75.

FAUSTINE. Pale pink. Each, \$1.50; 3 for \$3.75.

FLORENCE MacBETH. Large; light pink. Each, \$1.50; 3 for \$3.75.

FLOWERET OF EDEN. Mauve-pink. Each, \$1.50; 3 for \$3.75.

GLORIANA. Large; pink. A gold flower for the border. Each, \$2.00; 3 for \$5.50.

HAZEL KINNEY. Clear Hydrangea-pink, rose type. Very distinct in color and form, and a most desirable sort. Each, \$2.50; 3 for \$6.75.

JUDGE BERRY. Delicate pink; early. Very large. Each, \$1.00; 3 for \$2.75.

LADY ALEXANDRA DUFF. Immense flowers, four to six on a stem. Beautiful flesh-pink with golden anthers. Each, \$1.50; 3 for \$3.75.

MARIE CROUSSE. A most lovely variety. Tall stem and beautifully formed flowers of a charming shade of shell-pink. Fine. Each, \$1.00; 3 for \$2.75.

MARTHA BULLOCH. Rose-pink; large flower. Each, \$1.50; 3 for \$3.75.

MISS MINNEAPOLIS. New. Pale pink. Very attractive. A popular exhibition variety. Each, \$5.00.

MONS. JULES ELIE. A large, early-flowering Peony. One of the very best for cutting. Pale lilac-rose with an attractive silvery reflex. Each, \$1.00; 3 for \$2.75.

NANCY DOLMAN. Pink. Tall variety with large blooms. Each, \$2.50; 3 for \$6.75.

PHYLLIS KELWAY. Very large, loosely built, rose-pink bloom; center petals are intermingled with bright golden stamens. Stiff stems with abundant foliage. Fine. Each, \$2.00; 3 for \$5.50.

PINK OPAL. Light pink; good large variety. Late. Each, \$2.00; 3 for \$5.50.

SARAH BERNHARDT. Very large, late, rose-pink flowers. One of the very best for exhibition and cutting on account of its perfectly formed flowers and graceful stems. Blooms very freely. Each, \$1.00; 3 for \$2.75.

THERESE. Soft pink—the best pink. Develops a high crown; strong grower and very free bloomer. One of the best midseason sorts. Each, \$2.00; 3 for \$5.50.

WALTER FAXON. Vivid salmon-pink, often called salmon-rose. A good show flower. It is of medium size, mildly fragrant, with good stems and foliage. Each, \$2.00; 3 for \$5.50.

Red and Crimson Shades

BENJAMIN FRANKLIN. Dark crimson; tall. Each, \$1.00; 3 for \$2.75.

CHERRY HILL. Deep garnet, early, tall. Each, \$1.50.

FELIX CROUSSE. Late midseason red Peony. Probably the largest seller of all in its color. Each, \$1.00.

FRANCOIS ROUSSEAU. Dark red; early. Each, \$1.00; 3 for \$2.75.

GROVER CLEVELAND. Dark crimson. Each, \$1.00; 3 for \$2.75.

HENRY WEBSTER. Large red; late. Each, \$2.50; 3 for \$6.75.

KARL ROSENFELD. Tall; midseason. Globular, semi-rose type flowers of bright crimson. Each, \$1.00; 3 for \$2.75.

LONGFELLOW. One of the most popular red varieties because of its distinct fadeless color and general dependability, both for cutting and garden decoration. Comes into bloom in early midseason. Excellent foliage and long stiff stems. Each, \$1.50; 3 for \$3.75.

MME. GAUDICHAU. Dark crimson. Each, \$2.00; 3 for \$5.50.

ONONDAGA. New. Tall red, an outstanding variety. Each, \$7.50.

PHILIPPE RIVOIRE. Early flowering. Dark crimson; very symmetrical and with a rich rose scent. Each, \$3.50.

RICHARD CARVEL. Bright crimson. Large and early. Each, \$1.00; 3 for \$2.75.

White and Cream Shades

ALICE HARDING. Cream-white. A first-class Peony. Each, \$3.50.

ALSACE-LORRAINE. Creamy white, very large, perfectly formed flowers. Late. Each, \$1.50; 3 for \$3.75.

BALL O' COTTON. Pure white. Each, \$1.50; 3 for \$3.75.

BARONESS SCHROEDER. A tall midseason Peony with large, globular, flesh-white blooms. Each, \$1.50; 3 for \$3.75.

CRYSTOLA. Pure crystal-white, very large and full. Strong growth. Each, \$2.00; 3 for \$5.50.

DUCHESS DE NEMOURS. White. An old and popular variety. Each, \$1.00; 3 for \$2.75.

DULUTH. Pure white, useful as a cut flower. Late. Each, \$3.00; 3 for \$8.25.

FESTIVA MAXIMA. One of the oldest of the white Peonies and some say the very best. A sure bloomer; early. Each, \$1.00; 3 for \$2.75.

FRANCES WILLARD. Rose type, opening exquisite blush-white. Each, \$1.50; 3 for \$3.75.

KELWAY'S GLORIOUS. Creamy white with slight flecks of crimson. Very fragrant and considered one of the very best white Peonies. Late midseason. Each, \$3.00; 3 for \$8.25.

LE CYGNE. Very large, perfectly formed flower; the finest white. Received the highest rating of any Peony. Each, \$3.00; 3 for \$8.25.

MRS. A. M. BRAND. Purest white. Each, \$2.50; 3 for \$6.75.

MRS. EDWARD HARDING. Very early, white flowers. Resembles a large Gardenia. Each, \$1.50; 3 for \$3.75.

MYRTLE GENTRY. Blush-white, very desirable. Each, \$3.00; 3 for \$8.25.

MINNIE SHAYLOR. Semi-double white. One of the most popular among Peony growers. Each, \$2.00; 3 for \$5.50.

PRISCILLA ALDEN. Warm white; early. Each, \$3.00; 3 for \$8.25.

SARAH K. THURLOW. Large white; late. Each, \$2.00; 3 for \$5.50.

SOLANGE. Cream; very late. Each, \$1.50; 3 for \$3.75.

Yellow Shades

BETTY BLOSSOM. Soft yellow effect. Each, \$2.00; 3 for \$5.50.

LAURA DESSERT. Canary-yellow. Each, \$2.00; 3 for \$5.50.

PRIMEVERE. A most attractive midseason variety with a sulphur-yellow center and creamy guard petals. Each, \$2.00; 3 for \$5.50.

Single Varieties

HELEN. Shell-pink, tall and erect. A very pleasing Peony. Each, \$3.00; 3 for \$8.25.

JEANNE ERNOULD. A new apple-blossom-pink, of fine quality and beautifully formed. Tall, free flowering, and one of the finest of all single pink Peonies. Each, \$2.00; 3 for \$5.50.

LE JOUR. Extra fine white, with two rows of very long, wide overlapping petals. The center has a broad ring of golden yellow stamens surrounding a group of reddish carpels. It is considered the finest of all single white Peonies. Each, \$2.00; 3 for \$5.50.

MINNEHAHA. Very early. Bright cherry-red with center tufts of clear golden stamens. Each, \$1.00; 3 for \$2.75.

NELLIE. Very fine pink-blush, introduced by the world-famous Peony specialist, Kelway. Each, \$1.50; 3 for \$3.75.

PRIDE OF LANGPORT. Large rose-pink; midseason. Carpels smooth, tips red; disk distinct, pink. Plant large, spreading; flowers numerous and held high above the foliage. Each, \$1.50; 3 for \$3.75.

PRINCESS MATILDA. Large Tyrian pink; early. Plant medium size, spreading; flowers numerous. Each, \$1.50; 3 for \$3.75.

Imperial or Anemone-Flowered Peonies

ALTAR CANDLES. Large; light blush-pink. Midseason. Each, \$1.50; 3 for \$3.75.

CATHEDRAL. Large; Aster-purple. Midseason. Each, \$1.50; 3 for \$3.75.

CONSTANCE. Pink, yellow center. Each, \$2.00; 3 for \$5.50.

GLORY. Light Tyrian rose. Each, \$2.00; 3 for \$5.50.

KNIGHT OF THE THISTLE. Large; crimson with a purple sheen. Each, \$1.50; 3 for \$3.75.

MICHELL'S HARDY GARDEN ROSES

MicHELL's list of standard varieties of Roses offered dormant for fall planting until ground is frozen and again in spring, 1948 up to April 10th. Spring orders accepted subject to varieties being unsold. The six varieties marked * represent our color collection on inside back cover.

Price: \$1.50 each (color collection, \$7.50—1 each 6 varieties).

***AUTUMN.** Bicolor. Compact, very double flowers of burnt-orange streaked with red; moderately fragrant. Close-growing upright plants with heavy foliage. Known for superb fall bloom. 70 petals.

†**CONDESA DE SASTAGO.** Fragrant yellow and raspberry-red bicolor. This gay rose with the colors of sunny Spain will liven any Rose garden. A much sought-after variety.

†**EDEL.** An enormous bold, stately, well-built flower of great quality and finish. Color white with a shade of ivory at the base.

***E. G. HILL.** Beautiful long bud of perfect form and full double, high-centered flower of dazzling scarlet, shading to a deeper red as it develops; strong and vigorous habit.

***ETOILE DE HOLLANDE.** This Rose charms continuously with its delightful crimson color. One of the finest, most richly fragrant ever-blooming red Roses.

†**GOLDEN DAWN.** The ideal yellow garden Rose. The ovoid lemon-yellow bud, heavily splashed with crimson, develops into a well-formed, sweetly scented, large double sunflower-yellow flower that reminds you of the old favorite Marechal Niel.

†**GOLDEN RAPTURE.** Yellow. Large, high-centered flowers of golden yellow, with an old rose fragrance. Upright plants with large glossy foliage. Well-formed flower.

***JOANNA HILL.** An ideal garden Rose. The buds are large, long pointed and open to large, full semi-double, attractive, fragrant flowers of clear yellow with orange-yellow heart. A profuse bloomer.

***LOS ANGELES.** A pink Rose with salmon-pink shading, a color combination much sought after.

†**MCGREDDY'S IVORY.** Lovely large flowers of beautiful double form and fragrant. The color is soft, delicate creamy white merging into yellow at the base. Vigorous, disease-resistant and a prolific bloomer.

†**MRS. E. P. THOM.** Slender yellow buds and large, well-shaped blooms of bright canary-yellow, deepest in center. Blooms very freely.

†**PRESIDENT MACIA.** Very long bud, longer than any other Rose. Clear pink with slightly darker veining, long stems which makes it ideal for cutting.

†**POINSETTIA.** Lovely well-formed long buds; vividly colored flowers of Poinsettia-scarlet, which suggested the name.

MicHELL's dozen marked † for \$15.00.

†**RADIANCE.** The 2-tone pink, cupped flowers have a pungent, true Rose fragrance. In continuous demand on account of its vigorous, healthy growth and remarkable freedom of bloom.

†**RED RADIANCE.** Counterpart of Radiance from which it is a sport, possessing all of the good points of that variety, but differing in color, which is bright cerise-red.

†**SOEUR THERESE.** Candelabras (not clusters) of five to fifteen flowers forming on top of sturdy canes that hold the blooms erect. Buds are marked with carmine but the open blooms are clear yellow.

†**TALISMAN.** Its combination of apricot, gold, and deep rose-pink gives it a glittering mass of color over a long period of time.

***THE DOCTOR.** This magnificent Howard & Smith Rose is internationally recognized as one of the outstanding new Roses. We regard this Rose as one of the best; a variety which will be greatly sought after when better known. The buds are long and pointed, expand to a simply enormous bloom in their fully developed state. The color is an exquisite silvery pink, uniform in color both in bud and open flower, with a fragrance so intense that it can be detected many yards away.

SELECT LIST OF OUTSTANDING ROSES

A select list of patented varieties offered dormant for fall planting until ground is frozen and again in spring, 1948, up to April 10th. Spring orders accepted subject to varieties being unsold. The four varieties marked * represent our color collection shown on back cover.

Price: \$2.00 each (color collection, \$7.50—marked *), 3 each 4 varieties, \$20.00; 1 each 12 varieties, \$21.00. (AARS)—Award American Rose Society.

APRICOT QUEEN. (AARS.) A lovely combination of colors is to be noted in this glorious new Rose. Orange and apricot at base of petals, merging to salmon rose and Phlox-pink in the fully developed bloom is descriptive. Bud is long pointed. The fully developed flower shows a regular, well-placed petal arrangement. Good strong grower, with handsome leathery foliage which serves as a splendid foil to the perfectly formed buds and open blooms.

BUTTERSCOTCH. Nothing like the color of Butterscotch has so far been seen in Roses and very few Roses have as beautifully shaped flowers. The length and grace of the flower petals of this new variety are outstanding. The outside of the handsome petals is soft, pale orange-yellow; the inside lemon-chrome at the base, changing to pale yellow-orange, penciled very lightly with orange-buff.

CALIFORNIA. (AARS.) We regard this sensational novelty as outstanding among the numerous varieties contributed to the Rose world. Color is a glorious shade of ruddy orange toned with saffron-yellow, with the exterior of the broad petals overlaid with saturn-rose, a dual tone effect of indescribable richness and beauty. Growth vigorous with healthy, glossy green foliage.

CRIMSON GLORY. Glorious in its perfect form, its size, and its fragrance. The deep vivid crimson, shaded oxblood-red and finished with a velvety nap is still "tops" among the red Roses. Flowers late into the fall.

***DOUGLAS MacARTHUR.** A strong growing variety, has good healthy foliage and the rugged qualities lacking in so many Hybrid Tea Roses. The color is somewhat difficult to describe; rose, gold and salmon are blended into a fine tone. The flower is of regal form. All in all, one of the finest in its class, fully worthy of the illustrious name it bears.

EDITH WILLKIE. The flower bud is high and pointed, colored deep jasper-red. As the petals unfurl they show an inside surface of vivid shrimp-pink with lemon-yellow base. Throughout these charming tints one is aware of a decided old rose and coral-red. The petals are beautifully shaped and pointed. The fragrance is delightful.

***HEART'S DESIRE.** (AARS.) In this new Gold Medal variety your heart's desire for a red Rose bordering on perfection will be attained. Your heart's desire for a Rose with that haunting perfume will be fulfilled. Your heart's desire for the beautiful in form and texture will be gratified.

***MME. CHIANG KAI-SHEK.** (AARS.) This Rose has been named in honor of the first lady of China. Perfectly chiseled petals clasped in long spiral buds unfurl slowly, culminating in light clear yellow flowers of perfect proportions. The loveliest of all light yellow Roses.

MIRANDY. (AARS.) Large, very double, rich maroon-red blooms. among the finest red Roses in the

world. The plant is strong, free-branching, with heavy stout stems, and keeps producing its glorious flowers freely all season against a background of dark green foliage.

PEACE. Very large, full-petalled flowers of soft yellow suffused and edged pink. Distinctive and charming. A much sought-for Rose. Very popular.

***PEARL HARBOR.** The flowers are borne on vigorous canes without thorns. The buds are long pointed. The upper surface of the petals is a delicate shade of shell-pink with a golden bronze shading at base. The outer or reverse side of the petals is vivid Tyrian-rose. The plant is vigorous and healthy, and is an excellent grower.

SANTA ANITA. A lovely Rose. Perfectly formed long-pointed buds unfold into glorious flowers of crystal clear, peach-blossom-pink. No matter how hot or how brilliant the sun may be, the color of Santa Anita remains pure. A lovely pink variety which, because of its merits, belongs among the best of the pink Roses.

SHANGRI-LA. The long-pointed buds of Shangri-La are perfect, and upon opening, show a rare combination of tints and shades; blush, salmon and rose delicately blended, yet clear and sparkling like dawn itself. The bushes are vigorous, with ample dark, rich green foliage, as well as fine stems for cutting. It is our firm belief that the color and freshness of Shangri-La will brighten your Rose horizon for many a year.

MICHELL'S CLUSTER ROSES

LARGE-FLOWERING POLYANTHA or FLORIBUNDA ROSES

Dormant plants: Each, \$1.50; 3 for \$4.00; 12 for \$15.00, except Ming Toy—each, \$2.00; 3 for \$5.25; 12 for \$20.00.

CECILE BRUNNER. Charming light pink flowers shading into yellow at the base. Dainty in size and lovely in color. It is the perfect Rose for nosegays and corsages, also splendid for borders and massing.

CHEERIO. Superb in every respect. A Rose of outstanding merit whether used for mass planting in beds or borders, or to give an individual accent here or there in the garden, carrying a superabundance of brilliant double flowers gracefully arranged. The flower petals are clear mallow-pink shading to Tyrian rose at the base with the reverse or outside a luminous rose-madder that creates an effective color balance.

FLORADORA. Plant Patent pending. For scintillating brilliance this new Rose surpasses all others. The color is bright cinnabar with shades of scarlet and Geranium-red. It can only be matched by the most brilliant Azaleas which bloom for two weeks in the spring while the vivid, exciting blooms of this new Rose are borne continuously for five months in the year.

GLORIA MUNDI. The most brilliant orange-scarlet imaginable. Never fades. Showy, well-formed, double.

MING TOY. New Polyantha Rose. Beauty of detail brings forth all the fine qualities and loveliness centered in the new Polyantha Rose, "Ming Toy." The fifty or more petals are so precisely placed that the high-centered, brilliant rose colors may be fairly compared with the finest Camellias in form. The rugged plants abound with health, which accounts for the tremendous energy displayed in the constant production of Roses. This energy is manifested in the cut sprays as well as the plants. Close observation of its habits and character lead us to believe that Ming Toy will be found paramount among all Polyantas. Each, \$2.00; 3 for \$5.25; 12 for \$20.00.



Talisman—Hybrid Tea
(See opposite page)



ROSENELFE. Graceful clusters of dainty La-France-pink flowers superbly suited for cutting and table decoration. The handsomely shaped small buds or open blooms lend themselves perfectly to any kind of decoration. In the garden they never fail to draw attention. Color holds up well in hottest sun. Rosenelfe is a fine grower, has excellent foliage. One of the best in this group.

SPRINGTIME. A Rose that will thrill you with its exquisite pink shade of apple blossom with lighter center. Forms elegant impressive flower sprays, composed of semi-double cup-shaped blooms. Superb for cutting.

WHITE FINCH. The fine clusters of flowers are pure white. Especially valuable for contrasts such as in combination with Ming Toy or Floradora.

HARDY CLIMBING and RAMBLER ROSES

As ornamental plants for covering verandas, porches, side walls, pillars, fences, etc., these are unequalled, calling forth more admiration than anything else that can be used. The large-flowered varieties require no pruning beyond the removal of very old and worn-out canes, and the thinning out of weak growth. Canes becoming too long may be shortened.

The Ramblers, or small-flowered cluster type, should have the old canes removed at the base as soon as they finish blooming, training the new canes into place for next year's bloom.

Dormant plants, except where noted: Each, \$2.00; 3 of one variety, \$5.50.

BLAZE. Pat. No. 10. Scarlet-crimson blooms.

DOUBLOONS. Pat. No. 152. Here is a gloriously lovely climbing yellow Rose, noted for hardiness and vigorous, healthy growth, and furnished with dark green leathery foliage. The shapely buds open to large firm-textured blooms of saffron-yellow with clean, spicy fragrance.

MARY WALLACE. Large pink flowers with a luminous sheen; strong growth.

NEW DAWN. Pat No. 1. Blush-pink with delightful fragrance. Blooms continuously from early June until frost.

PAUL'S SCARLET CLIMBER. No other Rose in any class can compare with it for brilliancy of color, which is a vivid scarlet, that is maintained without burning or bleaching until the petals fall.

SILVER MOON. Midseason white. Great silvery white, semi-double blooms, with a foil of dark leathery foliage.

MICHELL'S SELECT FRUITS

PLUMS

The varieties Abundance and Burbank need cross pollinating; they will pollinate each other. Other varieties offered are self pollinating.

ABUNDANCE. A very productive, large variety of light cherry-red color. Aug.

BURBANK. Fruit round, cherry-red, with lilac bloom. Heavy bearer. Sept.

DIAMOND. Enormous, dark purple fruit with a beautiful bloom. Sept.

GREEN GAGE. Large, greenish, sweet fruit of good flavor. An excellent variety. Sept.

SHROPSHIRE DAMSON. Late. Medium-sized fruit, produced in thick clusters or groups. Tree a strong grower and very productive of dark purple-colored Plums. The popular old-fashioned Damson variety.

All Plum trees: 5 to 6 ft., each \$3.00; doz., \$33.50.

FRUIT TREES besides being ornamental, provide fine quality tree-ripened fruit for your table.



Burbank Plum

PEARS

Most varieties of Pears are self unfruitful, or self incompatible, even though they bear excellent pollen. Duchesse d'Angouleme has proved to be a desirable pollinator for the other varieties that we offer. Bartlett and Seckel will not cross pollinate; use Duchesse d'Angouleme if either or both of the above two are being planted.

Summer Varieties

BARTLETT. An old favorite. Juicy, well flavored and a good bearer. Aug.

CLAPP'S FAVORITE. A fine large yellow variety stained red; flesh fine-grained. Aug.

Fall Varieties

ANJOU. Fruit large and handsome, yellow with red blush; flesh of good flavor. Late keeper. Oct.

DUCHESS D'ANGOULEME. Large; flesh buttery, rich, and juicy. A good standard variety. Fine keeper. Oct.

KIEFFER. Late. Rather coarse-grained, but when well ripened is good for both eating and preserving. Good keeper. Oct.

SECKEL. A well-known, dark brown, small variety; flesh very sweet and juicy. Oct.

All Pear trees: 5 to 6 ft., each \$3.00; doz., \$33.50.

APPLES

Apple varieties may be classified roughly as self fruitful, partially self fruitful, and self unfruitful. Delicious and Wealthy are two good self-pollinators. Include these varieties with others of your choice from the list below.

DELICIOUS. A good late variety with rosy red fruit of good size. Truly delicious.

GRIMES GOLDEN. Late. Good size; yellow, and of fine flavor.

JONATHAN. Winter. Fruit medium to large; brilliant red; flesh juicy, fine grained, tender and very highly flavored. Bears heavy crops every year, and comes into bearing early.

McINTOSH. Winter. Medium size; nearly covered with a bright red; flesh white, tender, juicy, sub-acid. Tree hardy, vigorous, and healthy.

ROME BEAUTY. Late. Yellow shaded red; solid and juicy.

STAYMAN'S WINESAP. The best winter variety. Large, juicy, semi-sweet. Fine for eating and cooking. Prolific.

WEALTHY. Late. Round, red; sweet and a good keeper.

YELLOW DELICIOUS. Winter. Tree comes into bearing early, producing heavy crops. Very thrifty, hardy, and a vigorous grower. A golden Apple which has won its fame as an outstanding commercial variety.

YELLOW TRANSPARENT. Early and desirable. Good color; juicy and semi-sweet.



McIntosh Apple

CRAB APPLES

HYSLOP CRAB. Large, round, deep red fruit. The best variety for jelly. Sept.

All Apple and Crab Apple trees: 5 to 6 ft., each \$2.50; doz., \$27.50.

Special quick-crop size: 6 to 7 ft., each, \$3.50.

Quintuplet Apple Trees

9/16-in. cal. and up.

The popular 5-N-1 Apple varieties on each tree: Anoka, Red Jonathan, Red Delicious, Yellow Delicious and Transparent. Each, \$6.00.

CHERRIES

Sweet Cherries need cross pollination; use two varieties. Sour Cherries are satisfactory when planted alone.

BLACK TARTARIAN. Sweet. Very large; black; rich and juicy.

EARLY RICHMOND. Sour. An early variety of medium size; dark red fruit. Early June.

MONTMORENCY. Sour. Large, dark red fruit, about 10 days later than Richmond.

NAPOLEON (Royal Ann). The best and most profitable yellow sweet Cherry. Flesh very firm, juicy, and delicious.

All Cherry trees: 4 to 5 ft., each \$3.00; doz., \$33.50.

Cherry Trees: Special offer fruiting size trees available fall, 1947. Please mark orders stock "E."

Lambert: Extra large, sweet, jet black. Very popular, midseason.

Napoleon (Royal Ann): Large, pale yellow, bright red cheek, sweet, excellent flavor, prolific bearer, midseason.

Windsor: Large, sweet, almost black, fine quality. Valuable, late variety.

Yellow Spanish: Large, sweet, yellow with red tinge. One of the most beautiful and popular of the light colored Cherries. Heavy bearer. Midseason.

STRONG TREES

1 1/2-1 1/2 in. cal. \$3.75 each
1 1/2-2 in. cal. 5.00 each

PEACHES

Peach varieties are generally self fruitful, but J. H. Hale produces impotent pollen. For that reason it is desirable to interplant with varieties bearing potent pollen.

BELLE OF GEORGIA. White, red cheek; flesh white, of good flavor. Freestone. Sept.

CHAMPION. A large, handsome early white variety with red cheek; sweet and juicy. Aug.

ELBERTA. The standard market variety. Large; flesh yellow, juicy, and of high quality. A heavy bearer. Sept. 15th.

GOLDEN JUBILEE. Resembles Elberta. Skin yellow with red flesh; flesh golden yellow, juicy and sweet. Freestone. Early August.

HALE-HAVEN. Ripens two weeks before Elberta. Withstands cold temperatures; very hardy. A perfect freestone of extremely high color, yellow fleshed, large in size, good shipping qualities. Heavy bearer.

J. H. HALE. Larger than Elberta. Deep yellow with carmine blush; wonderful flavor. Stands shipping. Ripens about Sept. 10th.

SALBERTA. Late. Large yellow freestone. Ripens about 10 days to two weeks after Elberta. This new variety is being planted commercially in many Peach-growing sections.

All Peach trees: 3 1/2 to 4 ft., each, \$2.50; doz., \$27.50.

Special quick-crop size: 6 to 8 ft., each, \$3.50.

MICHELL'S SMALL FRUITS

How to Plant Grapes

Dig the hole as broad and deep as if a 3-year Apple tree were to be planted. Fill the hole up to the right depth for planting with compost or rich soil. A few old bones in the bottom of the hole will make rich feeding for the vines later on. Trim the roots slightly and cut back the top to three or four strong buds. Use rich soil around roots. Always plant firmly. Leave a mulch of straw manure over plant.

GRAPE VINES

CACO. Red. The most delicious of all Grapes and perfectly hardy. Bunch of good size, compact, and of good form. Rich in sugar, excellent in flavor. Vines very strong, vigorous growers, healthy and prolific. Each, \$1.00; 3 for \$2.75.

CATAWBA. Red. Delicious flavored; medium-size berry.

CONCORD. Purple. The well-known standard variety that succeeds wherever Grapes will grow.

DELAWARE. Light red with violet bloom. Bunches and berries are small but compactly set, sugary and delicious.

FREDONIA. Large black berry with heavy bloom. Cluster about medium in size. Very early; good quality; new and very promising.

MOORE'S EARLY. This is really an early Concord and is the standard early blue Grape. The vines are vigorous, healthy, and productive, bearing fruit of delicious quality.

NIAGARA. Light greenish white. An unusually strong grower. Bunches very large and compact. Berries large, semi-transparent; has very little pulp and is sweet to the center.

PORTLAND. White. The earliest of all Grapes. Large bunch and berry; flesh sweet, juicy and of fine flavor. A valuable early Grape for the home garden. Each, \$1.00; 3 for \$2.75.

All Grape Vines, except Caco and Portland: Two-year vines, each 75c; doz., \$8.50.



BLUEBERRY

Plant in acid but well-drained soil; space the plants 5 feet apart. The parent plants in our nursery have been inspected and found to be free of Blueberry "stunt disease." We offer the following varieties:

CONCORD, JERSEY, JUNE, RANCO-CAS, RUBEL.

	Doz.	100
12 to 15 in.	\$16.00	\$100.00
15 to 18 in.	18.00	115.00

BLACKBERRIES

ALFRED. For the home garden, Alfred is the ideal Blackberry. The bushes are loaded with tremendous berries, practically free from seeds, coreless and extremely juicy.

ELDORADO. Remarkably strong grower and an enormous producer of extra-size berries which are brilliant black and retain their color under all conditions. Very sweet and without core.

All Blackberries, extra-strong plants: Doz., \$3.00; 100, \$20.00.

THE NEW BOYSENBERRY

The Finest Vine Berry Yet Developed

A new hybrid vine berry developed from the Blackberry, Loganberry, and Raspberry.

The fruit, which is dark purple at first, becoming black when fully ripe, is of blackberry form with berries averaging 1½ inches long, with occasional fruit an inch longer.

The flavor is distinctively its own but somewhat resembles the raspberry; the sugar content is so high that no sugar is needed with ripe berries. 5 for \$1.50; 25 for \$5.50.

RASPBERRIES

CUMBERLAND. Blackcap. The largest Raspberry known. Selected specimens measure an inch in diameter.

LATHAM. The finest red Raspberry to date. More productive than any other variety. The berries are very large, bright red, and of wonderful flavor.

NEWBURGH. Midseason. Vigorous grower, hardy, and very productive. Fruit very large, firm; does not crumble. Precedes Latham a few days in ripening. An excellent shipper and keeper.

RANERE EVERBEARING. Brilliant red fruit of good size and excellent flavor; in fact, there is no good quality any of the regular varieties of Raspberries possess that is lacking in Ranere.

All Raspberries, extra-strong plants: 5 for \$1.50; doz., \$3.00; 25 for \$4.50.

STRAWBERRIES

Layer plants in all the standard varieties. 25 for \$1.50; 50 for \$2.50; 100 for \$4.00.

Everbearing varieties. 25 for \$2.50; 50 for \$4.50; 100 for \$8.00.

Pot-grown Strawberries will be available during summer months. For particulars see our spring catalog.

ALL PRICES SUBJECT TO MARKET CHANGES

HEDGE PLANTS

BERBERIS THUNBERGI

Barberry

A good hardy plant of low, dense growth. It is a brilliant light green from early spring to winter. In autumn the foliage is a bright crimson.

	Doz.
15 to 18-in. plants	\$7.50
18 to 24-in. plants	8.50

NEW RED-LEAVED BARBERRY

The foliage of this new variety is of a rich, lustrous, bronzy red. All that is required to develop its brilliant coloring at all seasons is that it be planted in full exposure to the sun.

	Doz.
Strong 15 to 18-in. plants	\$ 8.50
18 to 24-in. plants	10.00

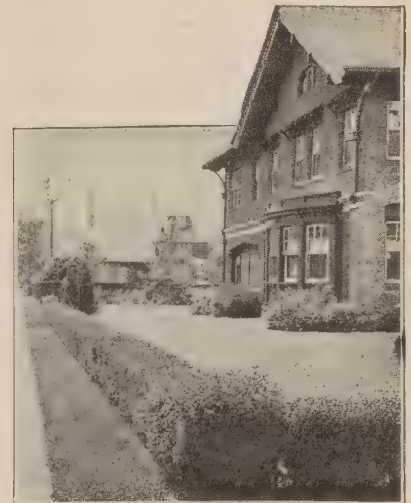
California Privet

This most popular of all hedge plants should be set 1 foot apart in double rows in zig-zag fashion, so that the plants are diagonally opposite each other. This practically places them 6 inches apart, which is desirable to get a quick, dense growth. Plant from October 15th till the ground freezes, and from March 15th to May 15th.

	Doz.	50	100
1½ to 2 feet	\$2.50	\$ 9.50	\$16.00
2½ to 3 feet	3.50	13.00	24.00
3 to 4 feet	5.00	18.00	35.00

(Special quotations on 1000 lots.)

Privet plants are best shipped by Express.



Privet Hedge

FLOWERING SHRUBS

Vines of all types, including many choice varieties of Clematis, will be offered in our spring catalog for shipment as soon as frost is out of the ground.

The months of April and May bring to growers and distributors of Plants and Shrubs such a demand upon their time and resources that we suggest you consult us on your garden needs during the winter months and place your order early to prevent disappointment when the spring rush is on.

H. F. MICHELL CO.

MICHELL'S RELIABLE GRASS SEED MIXTURES



Send for our FREE booklet, "Lawn Pointers," for suggestions on the care of your lawn.

AUTUMN IS IDEAL FOR REBUILDING THE LAWN

The cool, moist weather of late summer and early fall affords an ideal condition for rebuilding a lawn that has suffered from drought, neglect, or the ravages of weeds. Seed sown at this time will show quicker growth and has a tendency to stool or spread out, a condition not present during the warmer months. Competition with weeds is practically eliminated at this season, since the latter are incapable of germination until spring, by which time fall-sown grass is thoroughly established and the weeds have little chance to thrive. Seed may be sown successfully as late as October 15th in the latitude of Philadelphia, but we would recommend the month of September for best results.

Quantity to Sow for Lawns: We recommend sowing 5 pounds per 1000 square feet, 150 pounds per acre on new ground without grass. In renovating established lawns, use half the above quantities.

MICHELL'S GREEN VELVET LAWN SEED

This widely known combination of pure lawn grasses is the result of over 50 years' experience with problems of fine turf, and is recommended by us for the open, sunny lawn, where a closely knit weed-free turf, of lustrous green, velvety appearance, is desired. Lb., 85c; 3 lbs., \$2.40; 5 lbs., \$3.75; 10 lbs., \$7.00; 25 lbs., \$16.75; 100 lbs., \$65.00.

MICHELL'S TOP-NOTCH LAWN SEED.

A perfectly blended combination of the purest seed most suitable for the establishment of a luxuriant lawn. This formula is recommended to those who seek the ultimate in a lawn mixture. 3 lbs., \$3.15; 5 lbs., \$5.00; 10 lbs., \$9.50; 25 lbs., \$23.00; 100 lbs., \$90.00.

MICHELL'S CLOVER LAWN SEED.

The demand for a grass seed mixture containing an unusually large proportion of White Clover induced us to offer this brand, which is particularly suited to take firm hold and grow quickly on hard or wornout spots. Lb., \$1.10; 3 lbs., \$3.15; 5 lbs., \$5.00; 10 lbs., \$9.50; 25 lbs., \$23.00; 100 lbs., \$90.00.

MICHELL'S FAIRMOUNT PARK LAWN SEED.

A mixture meeting the requirements of those desiring a moderately priced grass seed. Lb., 60c; 3 lbs., \$1.65; 5 lbs., \$2.50; 10 lbs., \$4.50; 25 lbs., \$10.50; 100 lbs., \$40.00.

MICHELL'S TERRACE LAWN SEED.

Composed of deep-rooted varieties, adapted to the unusual requirements of the terrace. Lb., 90c; 3 lbs., \$2.60; 5 lbs., \$4.00; 10 lbs., \$7.50; 25 lbs., \$18.00; 100 lbs., \$70.00.

MICHELL'S EVERGREEN LAWN SEED.

Recommended to fill the requirements of the average lawn, this mixture will produce a very desirable turf of fine-bladed, hardy grasses, capable of withstanding considerable wear and periodic dry spells. ½ lb., 40c; 1 lb., 75c; 3 lbs., \$2.20; 5 lbs., \$3.25; 10 lbs., \$6.00; 25 lbs., \$14.50; 100 lbs., \$55.00.

MICHELL'S SEASHORE LAWN SEED.

A very satisfactory mixture for lawns along the coast. Lb., \$1.10; 3 lbs., \$3.15; 5 lbs., \$5.00; 10 lbs., \$9.50; 25 lbs., \$23.00; 100 lbs., \$90.00.

MICHELL'S SUPERIOR BENT GRASS MIXTURE.

Composed chiefly of the leading varieties of Bent Grass, but containing a sufficient percentage of other hardier fine-bladed grasses to produce a lawn of putting-green texture. Lb., \$1.50; 3 lbs., \$4.40; 5 lbs., \$7.00; 10 lbs., \$13.50; 25 lbs., \$32.50; 100 lbs., \$125.00.

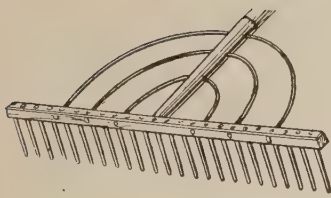
WHITE DUTCH LAWN CLOVER.

Excellent for sowing with grass on lawns and other places where a thick, quick growth is desired. Especially adapted for seashore lawns. Oz., 10c; ¼ lb., 40c; ½ lb., 65c; 1 lb., \$1.25; 5 lbs., \$5.65; 10 lbs., \$10.70; 25 lbs., \$25.75; 100 lbs., \$100.00.

MICHELL'S SHADED LAWN SEED

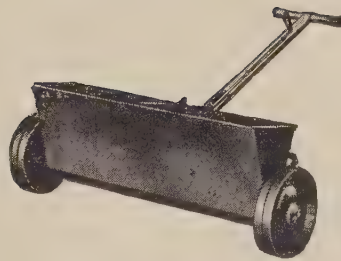
We have combined a mixture of grasses that will produce a perfect sward in heavily shaded places. It should be borne in mind that such locations present problems other than lack of sunlight, and for this reason the soil should be checked for drainage, possible acidity, and low fertility. Lb., 90c; 3 lbs., \$2.60; 5 lbs., \$4.00; 10 lbs., \$7.50; 25 lbs., \$18.00; 100 lbs., \$70.00.

A complete stock of Grasses in separate varieties always in stock. Ask for prices.



Wooden Rakes

AMES, No. 37X. 28-tooth; width 26 in.; steel bows. Price, \$2.00.



Michell's Fertilizer Spreader

- No. 1015. 14 in.\$ 3.75
- No. 1115. 16 in. 8.50
- No. 1215. 24 in. 18.50
- No. 1315. 30 in. 24.50

Hyper-Humus
Use at the rate of 1 to 4 pounds per square foot.

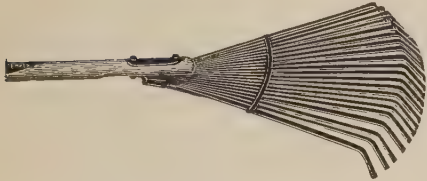
Prices for bagged material: 5 lbs., 30c; 10 lbs., 50c; 25 lbs., 85c; 50 lbs., \$1.25; 100 lbs., \$2.00; 500 lbs., \$9.50; ½ ton, \$15.00; ton, \$25.00.

In loose bulk: Truckload (minimum 10 tons), \$11.00 per ton, f. o. b. Newton, N. J.

Michell's Lawn Dressing

Michell's Lawn Dressing will induce healthy, vigorous growth, enabling the lawn to better withstand the hardships of winter weather. 5 lbs., 50c; 10 lbs., 85c; 25 lbs., \$1.50; 50 lbs., \$2.50; 100 lbs., \$4.75.

SALT HAY. For protection of plants and shrubs during winter. Lb., 5c; ½ ton, \$32.00; ton, \$60.00.



Bamboo Lawn Rakes

- 18 in.\$1.75
- 24 in. 2.25
- 30 in. 2.75

Michell's Hand Compressed-Air Sprayer

TIN. 1 qt. Price, \$1.25.

Tree Food (Michell's)

Not Used as a Top-Dressing

Drill holes in the ground 1½ feet deep and 5 feet away from the trunk, and extend out beyond the line of foliage; fill holes with food and then close. 5 lbs., 50c; 10 lbs., 85c; 25 lbs., \$1.50; 50 lbs., \$2.50; 100 lbs., \$4.50; ½ ton, \$38.50; ton, \$75.00.

Bonemeal Michell's Special Mixture

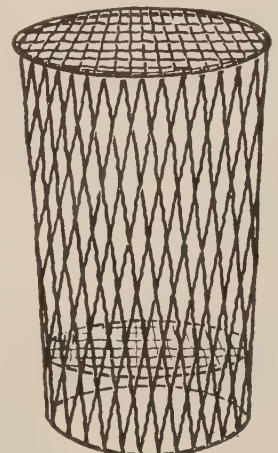
Rich in nitrogen and phosphoric acid. We recommend this especially for lawns, gardens, and greenhouses, or any purpose where a high-class fertilizer counts. Apply 800 to 1000 pounds per acre. 5 lbs., 50c; 10 lbs., 85c; 25 lbs., \$1.75; 50 lbs., \$3.25; 100 lbs., \$6.00; ½ ton, \$55.00; ton, \$85.00.

Vigoro

5-lb. bag, 45c; 10-lb. bag, 85c; 25-lb. bag, \$1.50; 50-lb. bag, \$2.50; 100-lb. bag, \$4.00.

WOOD ASHES. Apply 1000 pounds per acre. For top-dressing lawns and grass. 25 lbs., \$1.00; 50 lbs., \$1.75; 100 lbs., \$3.00; 200-lb. bbl., \$5.00; ½ ton, \$21.00; ton, \$40.00.

LIQUA-VITA. A liquid plant food containing 3 major plant foods, plus vitamin B₁, plant hormones, and 9 secondary plant foods. One-half ounce to 1 gallon is the maximum concentration. 4 ozs., 30c; 12 ozs., 60c; qt., \$1.25; gal., \$4.00; 5-gal. bbl., \$15.00.

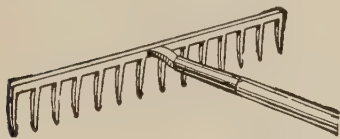


Rubbish Consumer

No. 5. Made of heavy, crimped wire; meshed top and bottom; galvanized; 29 in. high. Price, \$7.50.

Perforated Sheet Iron

CONSUMER. Similar to above. Price, \$6.00.



Steel Garden Rakes

No. 14. 14-tooth. Made of best cast steel, with long teeth. Price, \$1.35.

Sheep Manure

5 lbs., 40c; 10 lbs., 70c; 25 lbs., \$1.40; 50 lbs., \$2.30; 100 lbs., \$4.00; ½ ton, \$32.50; ton, \$60.00.

Hygro Soluble Plant Food

Dissolved in water and poured on plants, HY-GRO produces amazing results. Keeps plants healthy and productive as an all-season fertilizer. 3 ozs., 25c; 20 ozs., \$1.00; 10 lbs., \$4.00; 2-lb. jar with applicator, \$2.50.

Adco Artificial Manure

A powder which, when mixed with almost any non-woody vegetable waste and kept moist, gradually converts the mass into real manure. 25 lbs. is sufficient to make ½ ton of manure; 150 lbs. is sufficient to make 3 tons. 7½ lbs., \$1.00; 25 lbs. \$2.00; 150-lb. bag, \$10.50; 600 lbs., \$42.00; 2100 lbs., \$145.00.

Cow or Cattle Manure

Especially suited for soil mixing, mulching and liquid manuring. Apply 1000 pounds per acre. 5 lbs., 40c; 10 lbs., 70c; 25 lbs., \$1.40; 50 lbs., \$2.30; 100 lbs., \$4.00; ½ ton, \$32.50; ton, \$60.00.

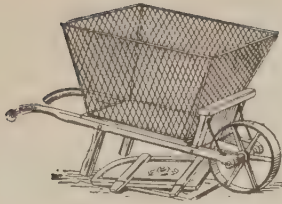
Peat Moss, Granulated

- Large bale\$5.50
- ½ bale 3.50
- 1-bu. bags75

An excellent material for fall or winter mulching, and a valuable source of organic matter when incorporated with the soil.

Lopping Shears

- Seymour-Smith. Wood handle.
- 30 inches long, heavy blades, for large branches\$3.50
- 22-in. handles 3.00
- Light blades for small branches,
- 30-in. handles 3.00
- 22-in. handles 2.50



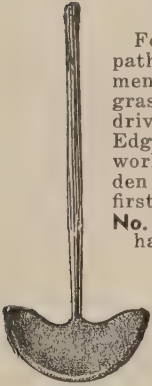
Keystone Leaf Rack

This device can be used on wheelbarrows with removable sides. Convenient for gathering leaves, cut grass, and rubbish. Has a capacity of 10 bushels. Made of galvanized wire, bolted to a wooden base. Price, not including wheelbarrow, \$13.75.

Edging Knives

For trimming edges of paths, etc. No other implement will put a finish to a grass border, a walk, or a drive edged with sod like an Edging Knife. On straight work it is well to use a garden line so as to make a first-class job.

No. 040. American. With handle. Price, \$1.50.



Water-Ballast Roller



Fill with water to weight it up to any number of pounds desired, as shown below. The same Roller can thus be used for soft turf, firm lawns, or for rolling the driveway and tennis court. Equipped with a device for keeping handles stationary. Ball axle bearings.

No. 601. Length, 24 in.; diam., 14 in.; Weight—empty, 60 lbs.; filled, 250 lbs., \$14.00.

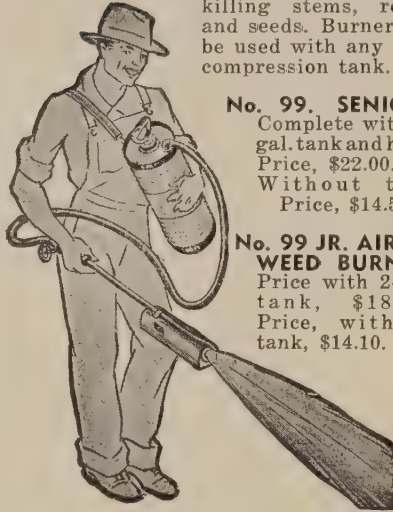
No. 602. Length, 24 in.; diam., 18 in. Weight—empty, 80 lbs.; filled, 330 lbs., \$22.25.

No. 603. Length, 24 in.; diam., 24 in. Weight—empty, 100 lbs.; filled, 566 lbs., \$27.65.

No. 604. Length, 24 in.; diam., 32 in. Weight—empty, 130 lbs., \$31.20.

Aeroil Weed Burner

For destroying any kind of weed or brush, killing stems, roots, and seeds. Burner can be used with any type compression tank.



No. 99. SENIOR. Complete with 4-gal. tank and hose. Price, \$22.00.

Without tank, Price, \$14.50.

No. 99 JR. AEROIL WEED BURNER. Price with 2-gal. tank, \$18.00. Price, without tank, \$14.10.

Sudbury Soil-Test Kit

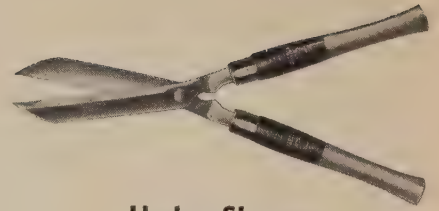


PROFESSIONAL SIZE. Model A. Widely used by large growers, nurseries, greenhouses, and Government stations. Capacity, 200 individual tests. Inexpensive refills available. Price, \$22.50.

HORTICULTURAL SIZE. Model B. For the advanced amateur, or nurseries, growers, and greenhouses whose requirements do not call for the larger professional equipment. Capacity, 200 individual tests. Inexpensive refills available. Price, \$12.50.

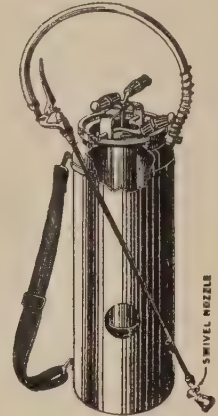
CLUB, Model C. This new model in the famous Sudbury line gives a complete season of soil-testing at a far lower price than ever before. Makes 50 individual tests for nitrogen, phosphorus, potash, and acidity, showing how to lime and fertilize for best results. Cased in handsome, sturdy, imitation leather. Price, \$4.75.

HOME GARDENER'S SIZE. Model D. A 20-test Kit. Complete with instructions and data on plant needs. Price, \$2.50.



Hedge Shears AMERICAN

8 in. \$3.00
9 in. 3.25
10 in. 3.50



Auto Spray, Brown's

A compressed-air Sprayer with open head and strongly reinforced corrugated tank.

No 4-D. STEEL TANK. Capacity, 4 gals. Equipped with hose and Auto-Pop attachment. Price, \$10.00.

Painted Labels

POT	100	1000
4 in., 5/8 in. wide	\$0.45	\$3.25
5 in., 5/8 in. wide	.55	3.50
6 in., 5/8 in. wide	.65	4.50

GARDEN

8 in., 7/8 in. wide	1.10	10.00
10 in., 7/8 in. wide	1.75	11.00
12 in., 7/8 in. wide	2.25	14.50

FIELD

18 in., 1 3/4 in. wide, not painted	5.00	48.00
-------------------------------------	------	-------

Tree Labels

ZINC SHEET. Wired	Doz.	100
	\$0.40	\$2.25

WOOD. Plain. 3 1/2 in.	100	1000
	\$0.50	\$3.00

WOOD. Painted. 3 1/2 in.	.60	3.50
--------------------------	-----	------

INDELIBLE MARKING PENCILS. Price, 15c.

GARDEN
BEAUTIFUL
**ROSE
GROUP**



Autumn



Los Angeles

6
Everblooming
ROSES

Selected 2-year-old
nursery-grown plants
Bloom from June until
frost.

**PLANT THIS FALL
FOR
NEXT YEAR'S ROSES**

**GARDEN BEAUTIFUL
COLLECTION**

1 each of 6 varieties
of everblooming Roses
as illustrated on this
page.

All hybrid selected
Rose bushes that are
strong rooted.

6 ROSES
All different
\$7.50



Joanna Hill



E. G. Hill

**Other varieties on
pages 15, 22, 23.**



The Doctor

Etoile
de Hollande

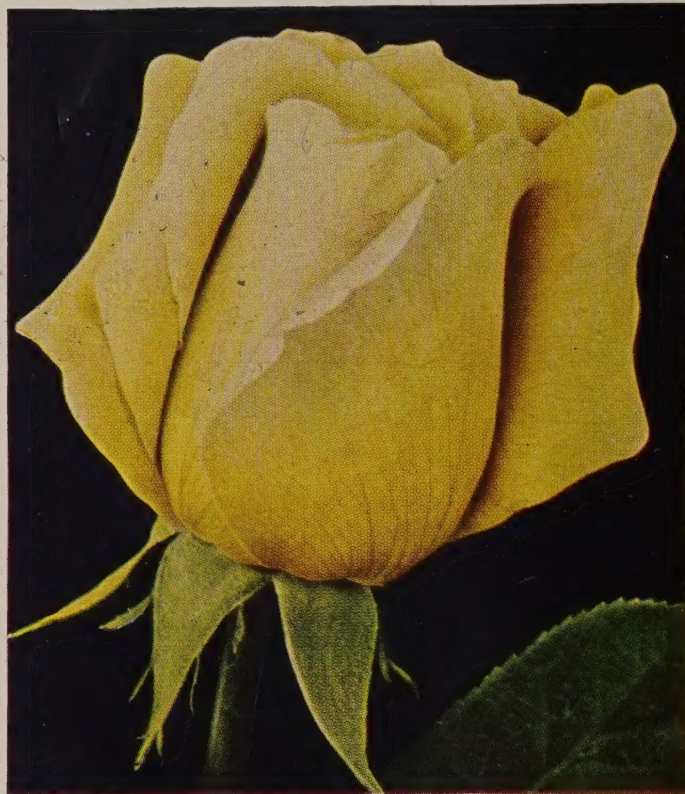


ROSES *The Glory of the Garden*

All of these will bloom from June to October
Plant this Fall for Roses Next Spring



Douglas McArthur



Mme. Chaing Kai-Shek



Heart's Desire



Pearl Harbor

A
Special
Collection

4

Lovely

ROSES for **\$750** Other varieties on page 24.

HENRY F. MICHELL CO., 516-518 Market St. Phila. 5, Pa.